





Content Tutoring
Writing Tutoring

Academic Year
Students
Visits

Using Collaborative Learning Online to Increase Student Success

*Kristen Martin, PASS Coordinator
UAH Student Success Center*

UAH Student Success Center



PASS Program

Tutoring Programs

Academic Coaching
Content Tutoring
Writing Tutoring

2018-2019 Academic Year

2600+ students
17,000+ visits

The PASS Program

- Supports ~15 courses each semester
- Targets historically difficult courses
- Considers DFW rates, enrollment rates, and faculty/departmental support



PASS Leader Role

Weekly responsibilities:

- Attend class
- Plan and lead 3 hours of group study sessions
- Hold 1-2 office hours in the SSC

Ongoing semester responsibilities:

- Participate in training and individual feedback
- Meet with faculty
- Maintain records



Fundamental to PASS

Active learning and collaboration

Relationships with faculty and students



Moving PASS Online

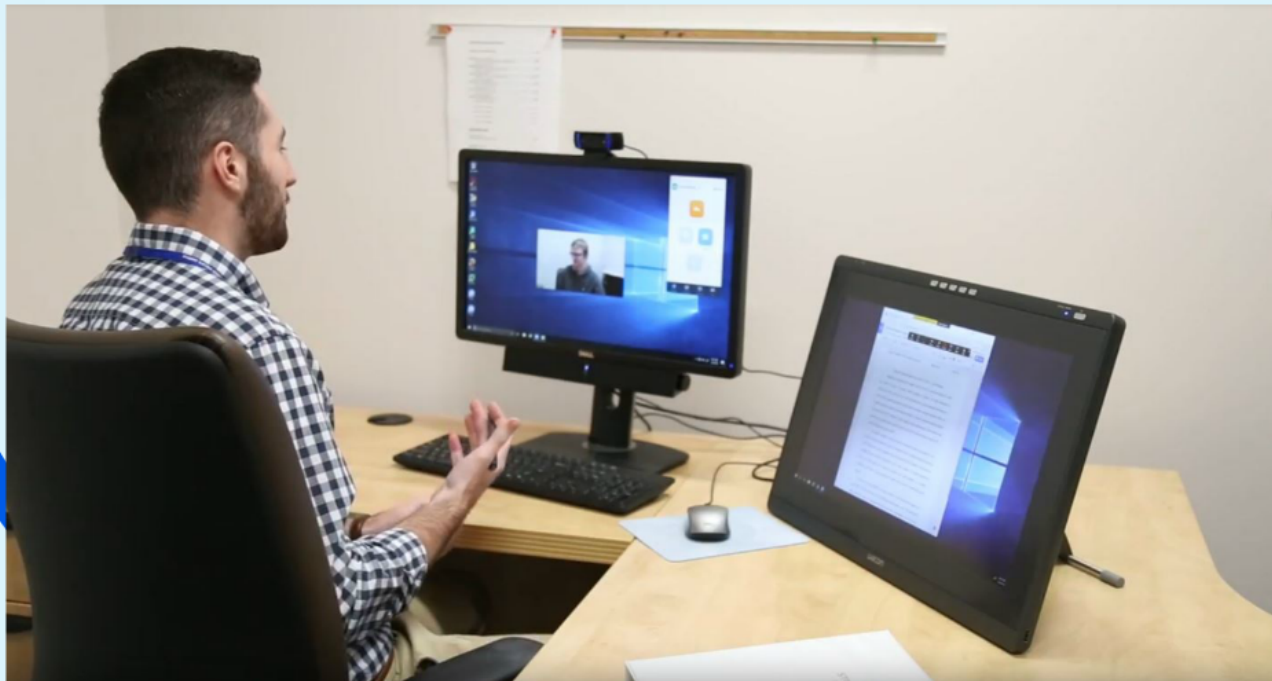
Considerations:

- Maintaining active and collaborative learning
- Communicating with students
- Keeping PASS leader current on course content
- Adapting office hours
- Training PASS leader



Background of SSC Online Support

- Asynchronous writing
- Synchronous online sessions for select areas
- Full release for all courses



Zoom

Welcome to PASS! Please send me your name for attendance.
TEST THIS WEEK. THURS 8am to Fri 2pm

Goal: Define key terms & analyze our models to prepare for the exam.

Opening: KWL

Topics:

- unemployment & inflation
- AD-AS model
- Income-Expenditure Problem
- Keynesian & Neoclassical Economics

The data below shows population and employment data for Unemployment Rate in a country with a total population of 1 million people.

Notes	# of people
Unemployed	210,000
Employed	820,000
Unemployed and looking for a job	210,000
Unemployed and not looking for a job	100,000
Employed and looking for a job	100,000
Employed and not looking for a job	720,000
Unemployed and looking for a job	210,000
Unemployed and not looking for a job	100,000

What is Unemployment Rate?

Choose 1 answer:

☐ 9%

☐ 25%

☐ 80%

☐ 41%

☐ 82.5%

Show Calculator

Do 6 problems

Check

Adult Civilian Population: 16 years or older (not a student not in the military) Labor Force Participation Rate: This is the percentage of adults in an economy who are either employed or who are unemployed and looking for a job Labor Force: the number of employed plus the unemployed

350,000

150,000

labor force

potential l.f. 350k + 150k = 500k

350,000 / 500,000 = 70%

to PASS! Please send me your name for attendance.
EST THIS WEEK. THURS 8am to
Fri. 2pm

define key terms & analyze our models to prepare for the exam.

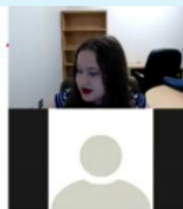
WL

employment & inflation
S model

- Expenditure Problem

ression & Neo classical

conomics



Polls

Polling 1: Polling Questions Edit

1. What is your favorite color?

☐ Red

☐ Green

☐ Blue

Launch Poll

Flashcards Types of Unemployment | Khan Academy

Unemployment (practice) | Khan Academy

https://www.khanacademy.org/economics-finance-domain/ap-macroeconomics/economic-indicators-and-the-business-cycle/unemployment/a/types-of-unemployment

Economics and finance > AP® Macroeconomics > Economic indicators and the business cycle > Unemployment

Unemployment rate primer

Natural, cyclical, structural, and frictional unemployment rates

Worked free response question on unemployment

Lesson summary: Unemployment

Practice: Unemployment

Practice: Types of unemployment and the natural rate of unemployment

Next tutorial: Price Indices and inflation

The table below shows population and employment data for Downtown Abbey, a country with a total population of 1 million people.

Status	# of people
Children 0-15 years old	200,000
Employed	325,000
Unemployed	25,000
Discouraged adult workers	50,000
Part-time students over 15	100,000
Retired individuals	100,000
Stay-at-home parents and other non-working civilians over 16	100,000
Non-civilians (employed by armed forces)	60,000
Institutionalized individuals	40,000

labor force

potential l.f.

350K + 150K = 500K

What is Downtown Abbey's labor force participation rate (LFPR)?

Choose 1 answer:

☐ A 50%

☐ B 35%

☐ C 80%

☐ D 41%

☐ E 32.5%

Show Calculator

Adult Civilian Population: 1 years or older (not a student not in the military) • Labor Force Participation Rate: This is the percentage of adults in an economy who are either employed or who are unemployed and looking for a job • Labor Force: the number of employed plus the unemployed

$$\frac{350,000}{350,000 + 150,000} = 70\%$$

Communication



STUDENT SUCCESS CENTER
HUNTSVILLE, ALABAMA

SCN 143 PASS WEEKLY SCHEDULE AND ZOOM INFORMATION

Joining PASS Sessions and Office Hours:

- Session and office hour Zoom meeting link: <https://uath-huntsville.zoom.us/j/502731700>
- You will be prompted to download Zoom if you haven't used it on that device before
- You can use Zoom on PC, Mac, Linux, iOS, or Android devices
- If you do not have a microphone or speaker on your computer, you can call in for audio:
 - o Dial from the US: 666-627-6793 or 669-400-8833
 - o Online Meeting ID: 502 731 700
 - o International numbers available: <https://zoom.us/j/502731700>

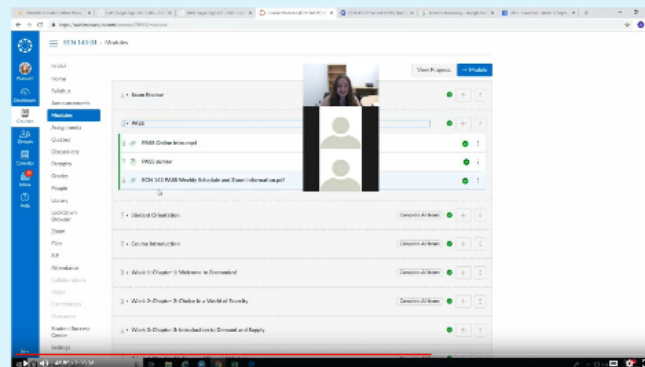
Weekly Schedule:

PASS Sessions
Wednesday 6:30-7:00pm
Thursday 7:00-8:00pm
Friday 1:00-2:00pm

Office Hours
Wednesday 8:00-9:00pm
Thursday 7:00-10:00pm

Contact Information:

Gabelele: gabelele@uath.edu
PASS Programs: pass@uath.edu
Student Success Center text: 354-404-2476





STUDENT SUCCESS CENTER

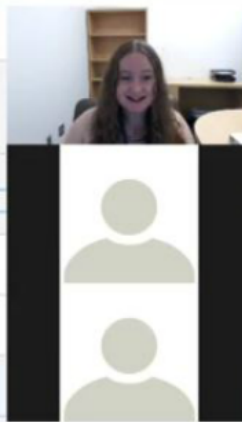
THE UNIVERSITY OF ALABAMA IN HUNTSVILLE

ECN 143-01 > Modules

View Progress

+ Module

Exam Review	✓	+	⋮	
PASS	✓	+	⋮	
PASS Online Intro.mp4	✓		⋮	
PASS survey	✓		⋮	
ECN 143 PASS Weekly Schedule and Zoom Information.pdf	✓		⋮	
Student Orientation	Complete All Items	✓	+	⋮
Course Introduction	Complete All Items	✓	+	⋮
Week 1: Chapter 1: Welcome to Economics!	Complete All Items	✓	+	⋮
Week 2: Chapter 2: Choice in a World of Scarcity	Complete All Items	✓	+	⋮
Week 3: Chapter 3: Introduction to Demand and Supply	✓	+	⋮	





ECN 143 PASS WEEKLY SCHEDULE AND ZOOM INFORMATION

Joining PASS Sessions and Office Hours:

- Session and office hour Zoom meeting link: <https://uah-uasystem.zoom.us/j/502731700>
- You will be prompted to download Zoom if you haven't used it on that device before
- You can use Zoom on PC, Mac, Linux, iOS, or Android devices
- If you do not have a microphone or speakers on your computer, you can call in for audio:
 - Dial from the US: 646-876-9923 or 669-900-6833
 - Enter Meeting ID: 502 731 700
 - International numbers available: <https://zoom.us/j/502731700>

Weekly Schedule:

PASS Sessions

Wednesdays 6:30-7:30pm

Thursdays 7:00-8:00pm

Fridays 1:00-2:00pm

Office Hours

Wednesdays 8:00-9:00pm

Thursdays 9:00-10:00am

Contact Information:

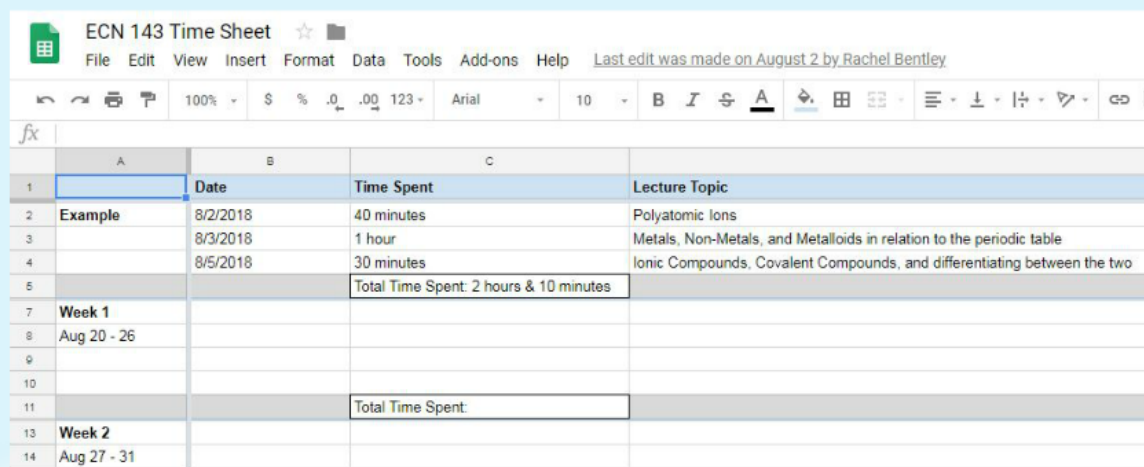
Gabrielle: gc0024@uah.edu

PASS Program: pass@uah.edu

Student Success Center front desk: 256-824-2478

Other Logistical Considerations

- Keeping current with course content
- SSC office hours
- Training



The screenshot shows an Excel spreadsheet titled "ECN 143 Time Sheet". The spreadsheet has a header row with columns A, B, C, and D. The data rows are as follows:

	A	B	C	D
1		Date	Time Spent	Lecture Topic
2	Example	8/2/2018	40 minutes	Polyatomic Ions
3		8/3/2018	1 hour	Metals, Non-Metals, and Metalloids in relation to the periodic table
4		8/5/2018	30 minutes	Ionic Compounds, Covalent Compounds, and differentiating between the two
5			Total Time Spent: 2 hours & 10 minutes	
7	Week 1			
8	Aug 20 - 26			
9				
10				
11			Total Time Spent:	
13	Week 2			
14	Aug 27 - 31			

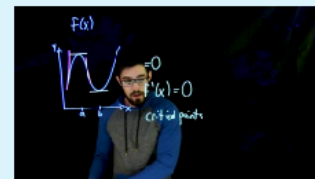
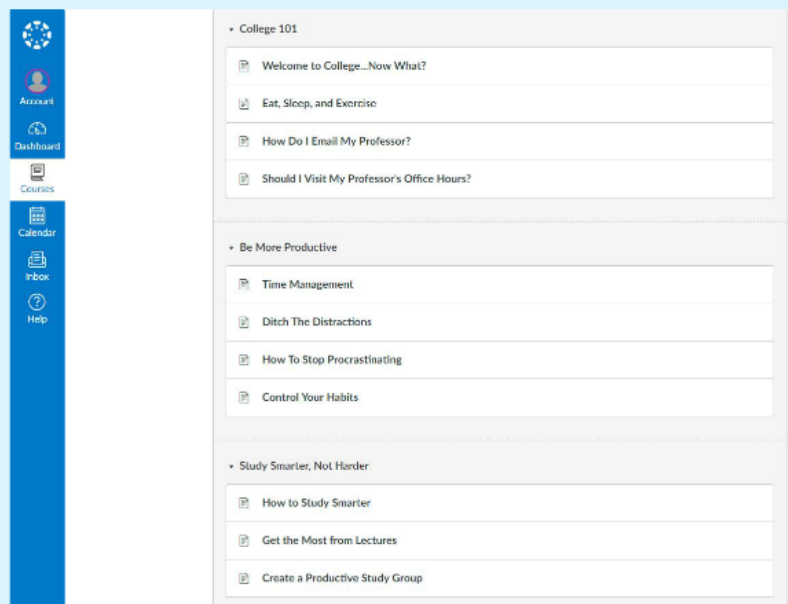
Next Steps for Online PASS

- Expand into currently-supported courses transitioning to online sections
- Add online components to common curriculum on-ground courses

How have you transitioned an on-ground course or service online while still keeping its quality and integrity?



SSC Canvas Course & Canvas Commons






Account


Dashboard


Courses



Calendar


Inbox


Help

▼ College 101

 Welcome to College...Now What?

 Eat, Sleep, and Exercise

 How Do I Email My Professor?


 Should I Visit My Professor's Office Hours?

▼ Be More Productive

 Time Management

 Ditch The Distractions

 How To Stop Procrastinating

 Control Your Habits

▼ Study Smarter, Not Harder

 How to Study Smarter

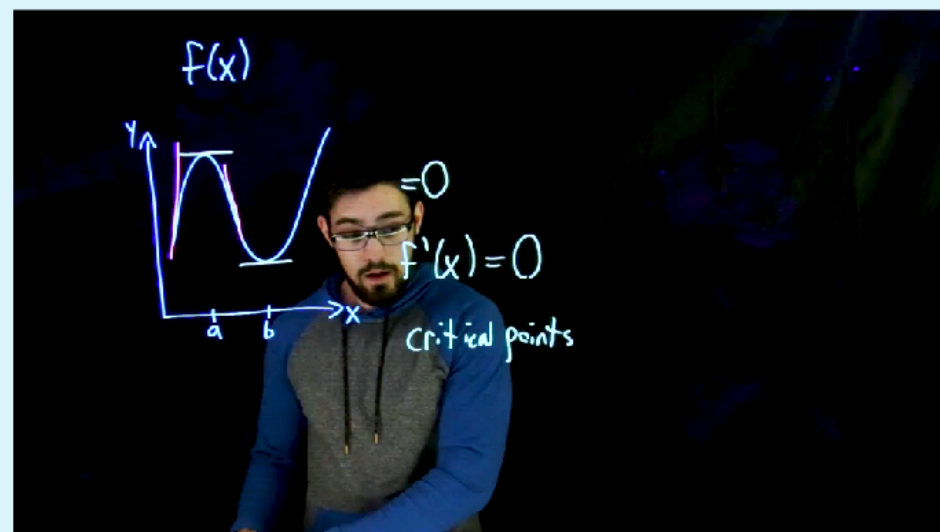
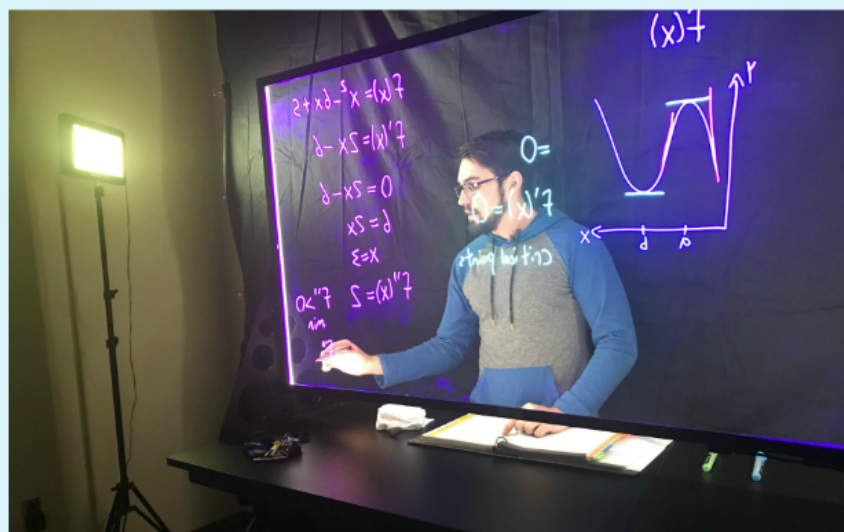
 Get the Most from Lectures

 Create a Productive Study Group

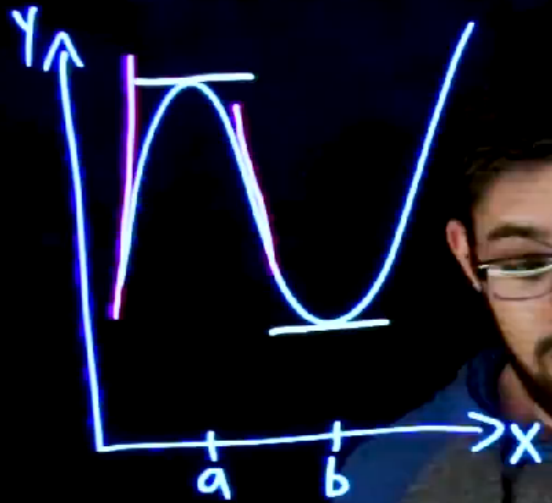


STUDENT SUCCESS CENTER

THE UNIVERSITY OF ALABAMA IN HUNTSVILLE



$f(x)$



$$=0$$

$$f'(x)=0$$

critical points

How Faculty Can Partner With Academic Support Services

- Communicate with students about support options and how to use them well
- Encourage all students to participate
- Give a "recommended order of activities"
- Add Canvas Commons resources to your course
- Assist with content-specific resources
- Communicate with program staff

Questions?



Questions?

