



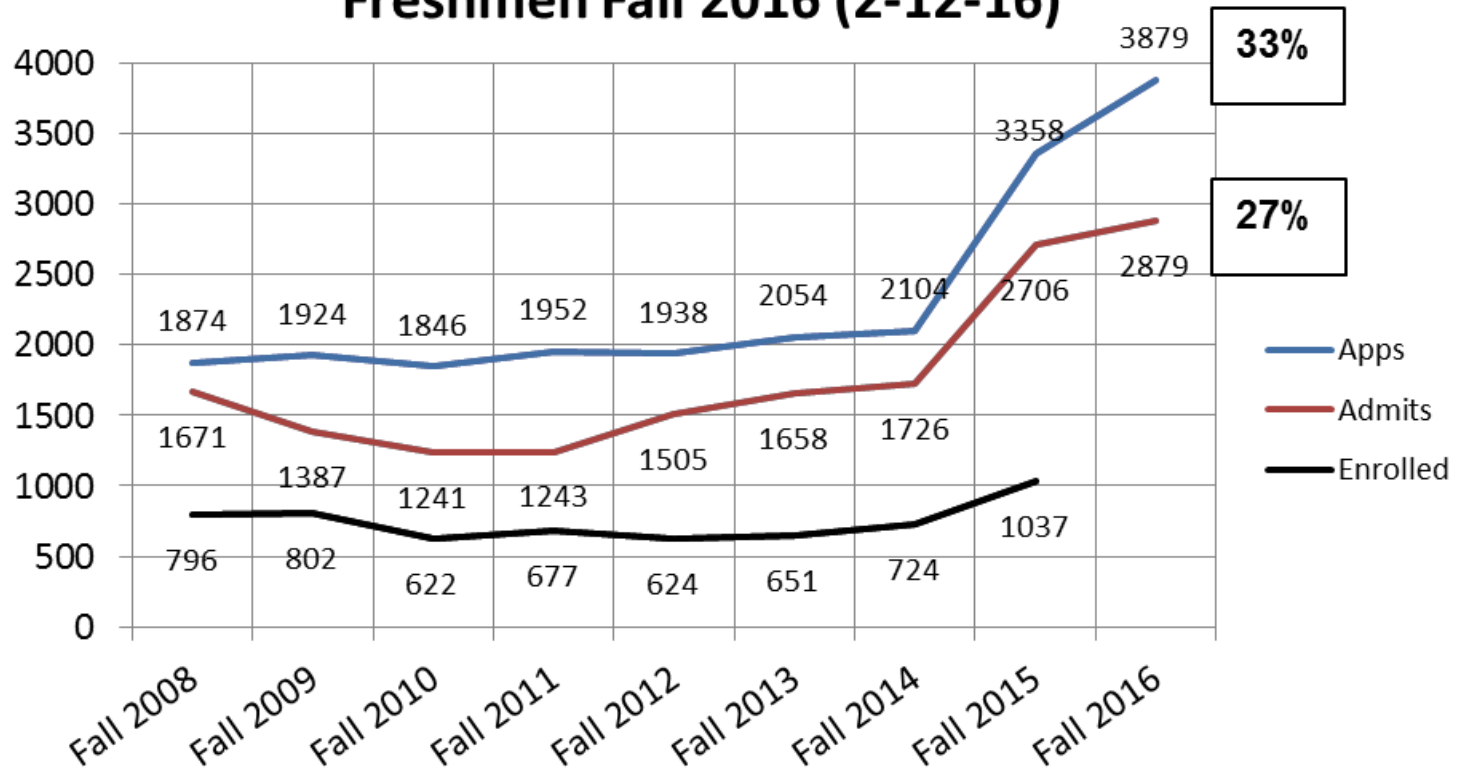
THE UNIVERSITY OF
ALABAMA IN HUNTSVILLE

Agenda

- Board Meeting
April 7 and 8
- Campus Master Plan
- Student Housing
 - Additional Greek Housing
 - Additional Residence Hall
 - Charger Village Mirror Image
- Carnegie Classification
- Budgeting
 - Enrollment Projections (7,866 to between 8,100 and 8,200)



Freshmen Fall 2016 (2-12-16)

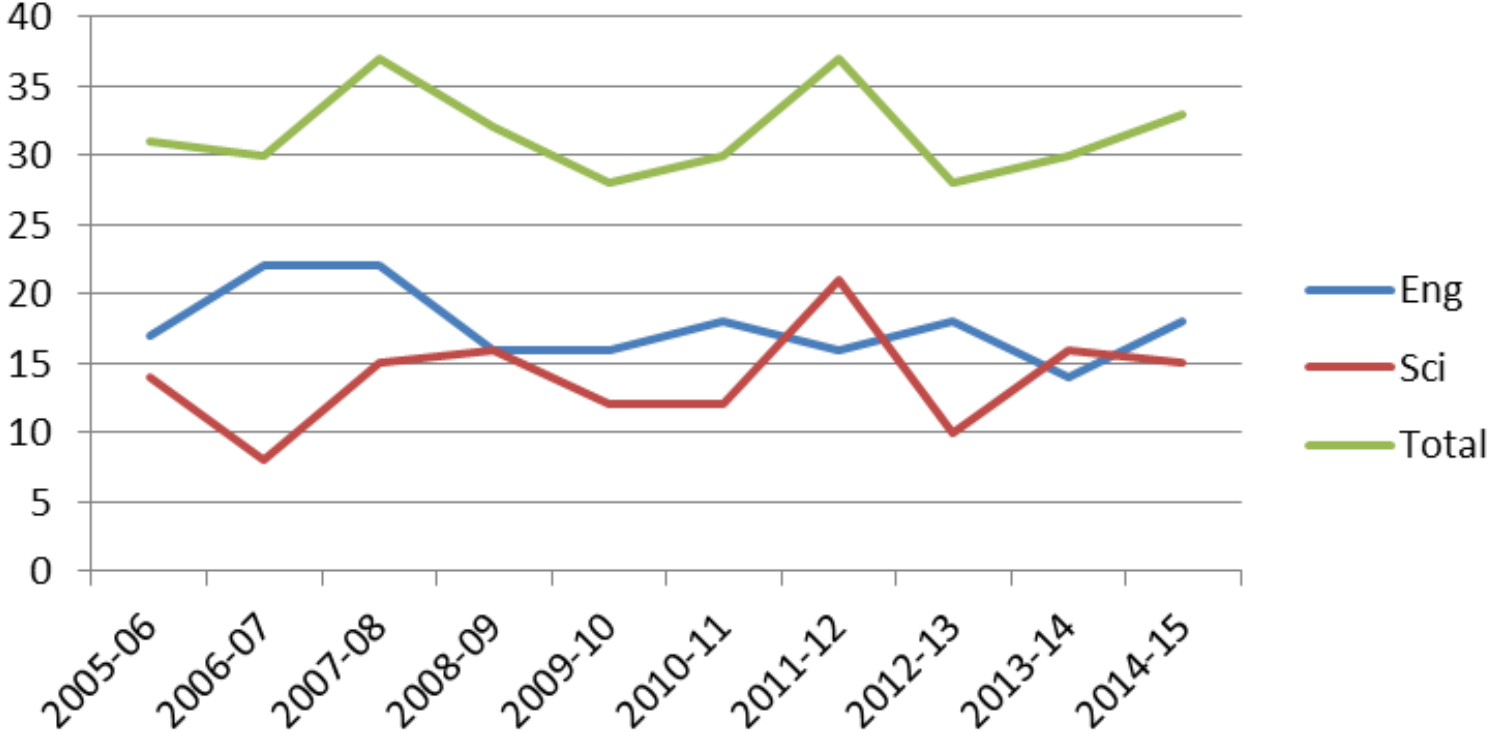


Carnegie Classification

Basic:	Higher Research Activity (R2)
UG Program:	Professions plus arts & science, high graduate coexistence
Grad Program:	Research Doctoral; STEM-dominant
Enrollment Profile:	High UG (10-24% Grad)
UG Profile:	Four-year, medium full-time (60 -79%), selective (middle two-fifths), higher transfer-in ($\geq 20\%$)
Size & Setting:	Four-year, medium (3,000-9,999), primarily nonresidential (< 25% UG on campus)

	Univ. of Alabama Huntsville			Median for Highest Research			UAH/Median Proportions	
	2010	2015	%chg.	2010	2015	%chg.	2010	2015
S&E R&D Exp (\$Thousands)	61,508	85,994	40%	255,916	319,818	25%	0.24	0.27
S&E Non-R&D Exp (\$thousands)	14,310	3,331	-77%	24,527	14,914	-39%	0.58	0.22
Postdocs & NFR-PHD Staff	78	87	12%	336	387	15%	0.23	0.22
Humanities R/S Doc Degs	0	0	-	35	45	29%	0.00	0.00
Social Science R/S Doc Degs	0	0	-	34	37	9%	0.00	0.00
STEM R/S Doc Degs	32	29	-9%	134	152	14%	0.24	0.19
Other R/S Doc Degs	0	1	-	74	76	3%	0.00	0.01

PhD Graduates



Carnegie Changes

Institution		FY14 Res Expend \$1,000s	Res/# Fac+Staff Ranking	Res/PhD Graduates Ranking
R1 to R2 (99 to 105)				
Dartmouth	R2	\$187,681	60	23
Mississippi State	R2	\$209,729	27	39
Montana State	R2	\$113,348	56	20
North Dakota State	R2	\$154,437	17	43
Rensselaer	R2	\$105,608	39	120
Rockefeller	R2	\$316,368	2	1
UAH	R2	\$89,325	28	9
Yeshiva	R2	\$306,826	45	12
R2 to R1 (108 to 115)				
Boston College	R1	\$49,724	185	194
Clemson	R1	\$161,070	92	127
Florida International	R1	\$132,531	122	112
George Mason	R1	\$98,680	169	181
Kansas State	R1	\$184,945	85	74
Northeastern	R1	\$116,245	129	146
Syracuse	R1	\$66,321	184	180
Temple	R1	\$224,101	154	95
Texas Tech	R1	\$159,308	136	164
University of Mississippi	R1	\$109,922	100	91
University of North Texas	R1	\$44,180	189	207
University of Wisconsin-Milwaukee	R1	\$60,752	179	192
UT Arlington	R1	\$89,175	116	176
UT Dallas	R1	\$99,727	103	155
West Virginia	R1	\$164,454	163	81

FY14 to FY15		FY15 to FY16	FY16 to FY17
Cash Basis	Asset Basis		
State Appropriation →	State Appropriation →	→	→
Tuition and Fees ↑	Tuition and Fees ↑	↑↑	↑↑
F&A ↓↓	F&A ↓↓	?	?
Gifts →	Gifts →	→	→
Auxiliary ↑	Auxiliary ↑	↑	↑
	Investment Income ↓↓↓	?	?
Expenditures	Expenditures		
Operations ↓	Operations ↓	↓	↓
	Depreciation		
	Pension Liability		
Net Increase ↑	Net Decrease ↓		

General Fund Exp History

