

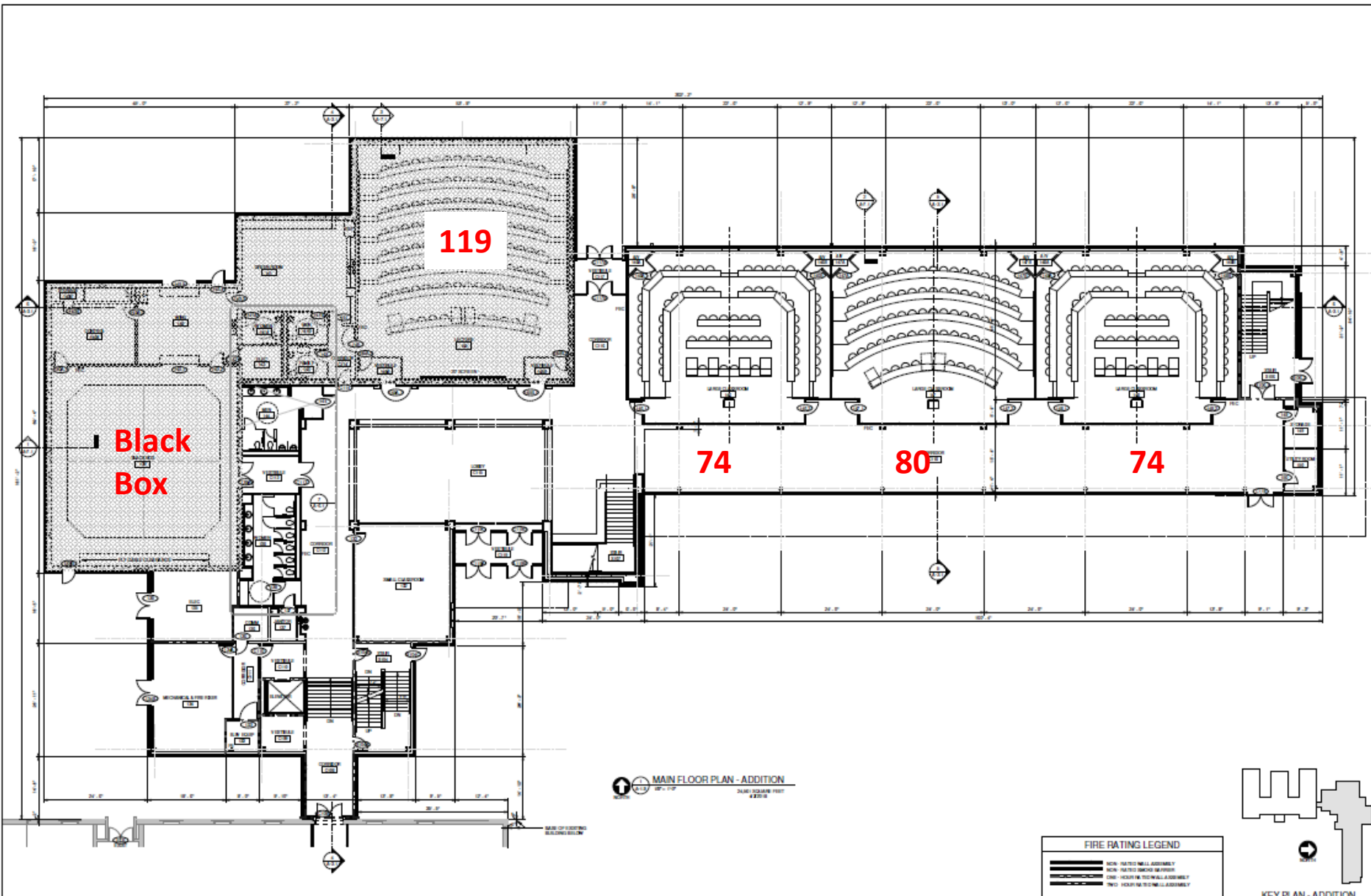


THE UNIVERSITY OF
ALABAMA IN HUNTSVILLE



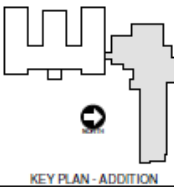
NOLA VANPEURSEM
ARCHITECTS, PC





119 MAIN FLOOR PLAN - ADDITION
 2/16/17
 2462 SQUARE FEET
 4.80/16

FIRE RATING LEGEND		
	NON-RATED WALL ASSEMBLY	
	NON-RATED CEILING ASSEMBLY	
	ONE-HOUR FIRE WALL ASSEMBLY	
	TWO-HOUR FIRE WALL ASSEMBLY	



NOT FOR CONSTRUCTION
 PRELIMINARY SUBMITTAL

NOLA VANPEURSEM
 ARCHITECTS, PC
 MEMBER OF THE AMERICAN INSTITUTE OF ARCHITECTS

301 JEFFERSON AVENUE
 HUNTSVILLE, ALABAMA 35893

256.333.6507
 NOLA@NVAARCHITECTS.COM

THE UNIVERSITY OF ALABAMA IN HUNTSVILLE

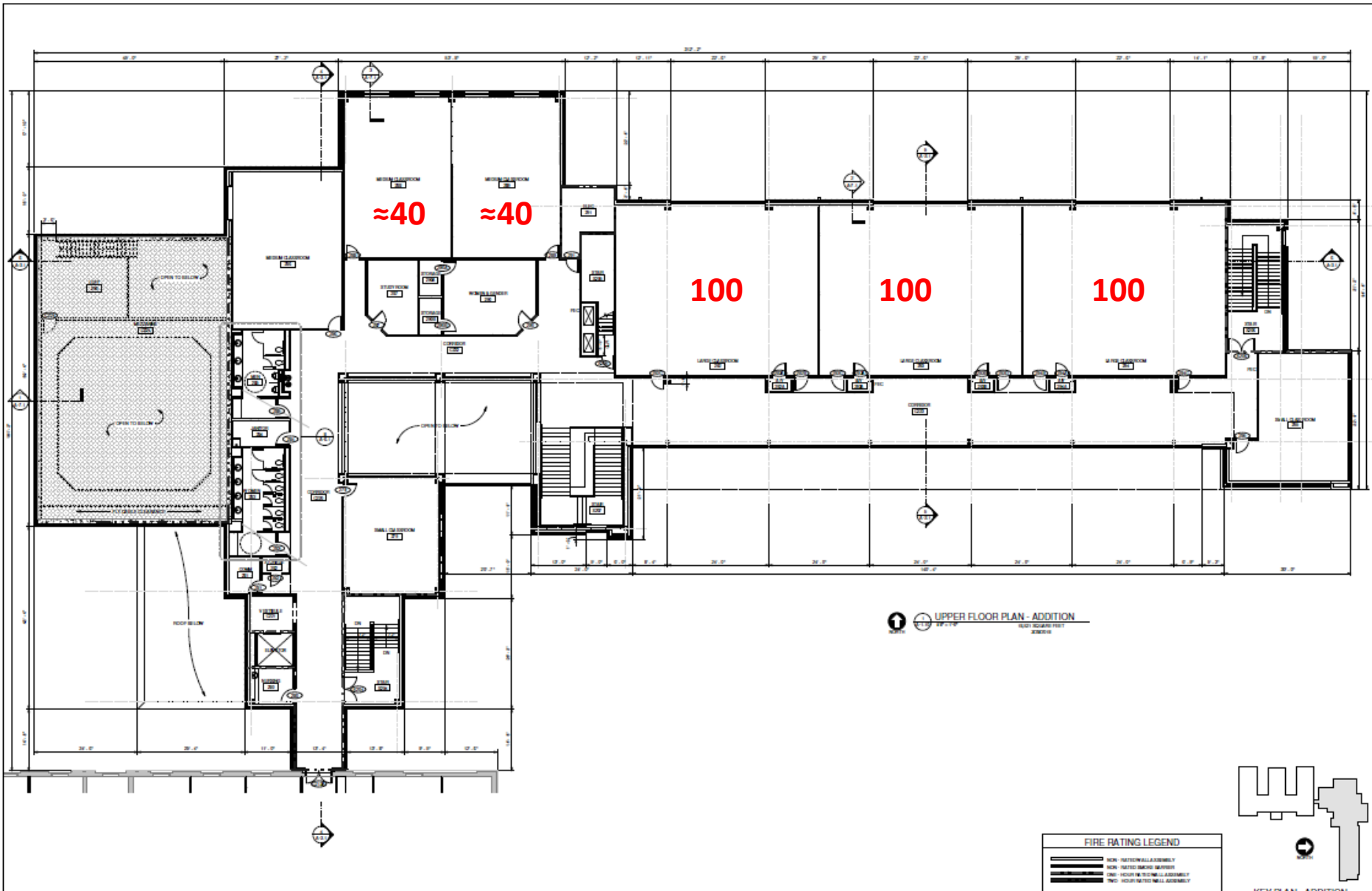
MORTON HALL RENOVATION AND ADDITION

301 Sparkman Dr NW
 Huntsville, AL 35899

JOB NUMBER 17951	REVISIONS	DATE
	1	
	2	
	3	
	4	
	5	
	6	
	7	
	8	
	9	
	10	

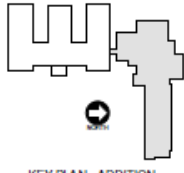
DATE PLOTTED
 MAIN FLOOR PLAN - ADDITION

DATE ISSUED
 A-1.9



UPPER FLOOR PLAN - ADDITION
100 SQUARE FEET APPROX

FIRE RATING LEGEND	
	NON-RATED WALL ASSEMBLY
	NON-RATED WINDOW OPENING
	FIRE-RATED WALL ASSEMBLY
	FIRE-RATED WINDOW OPENING



KEY PLAN - ADDITION

NOT FOR CONSTRUCTION
PRELIMINARY SUBMITTAL

NOLA VANPEURSEM ARCHITECTS, PC
MEMBER OF THE AMERICAN INSTITUTE OF ARCHITECTS

301 JOSEPH PERKINS AVENUE
HUNTSVILLE, ALABAMA 35893

PHONE: 256-453-6517
WWW.NVAARCHITECTS.COM

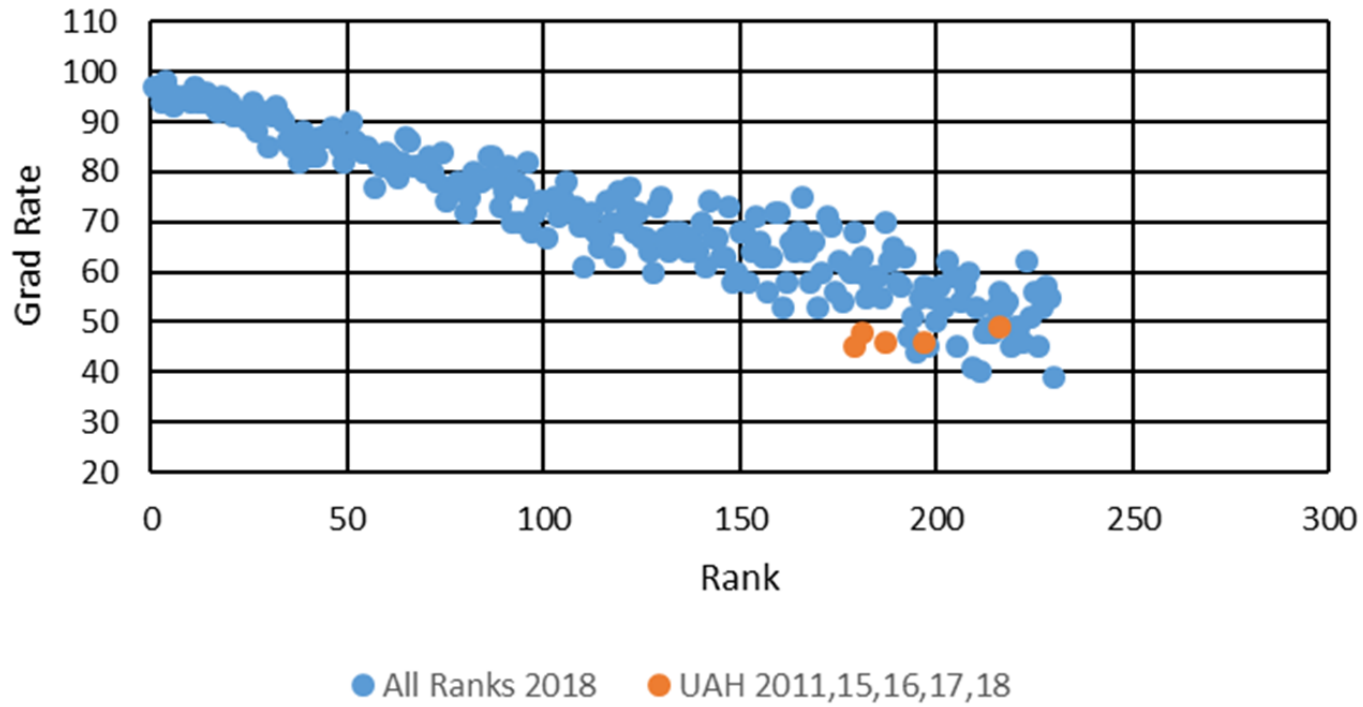


MORTON HALL RENOVATION AND ADDITION

301 Sparkman Dr NW
Huntsville, AL 35899

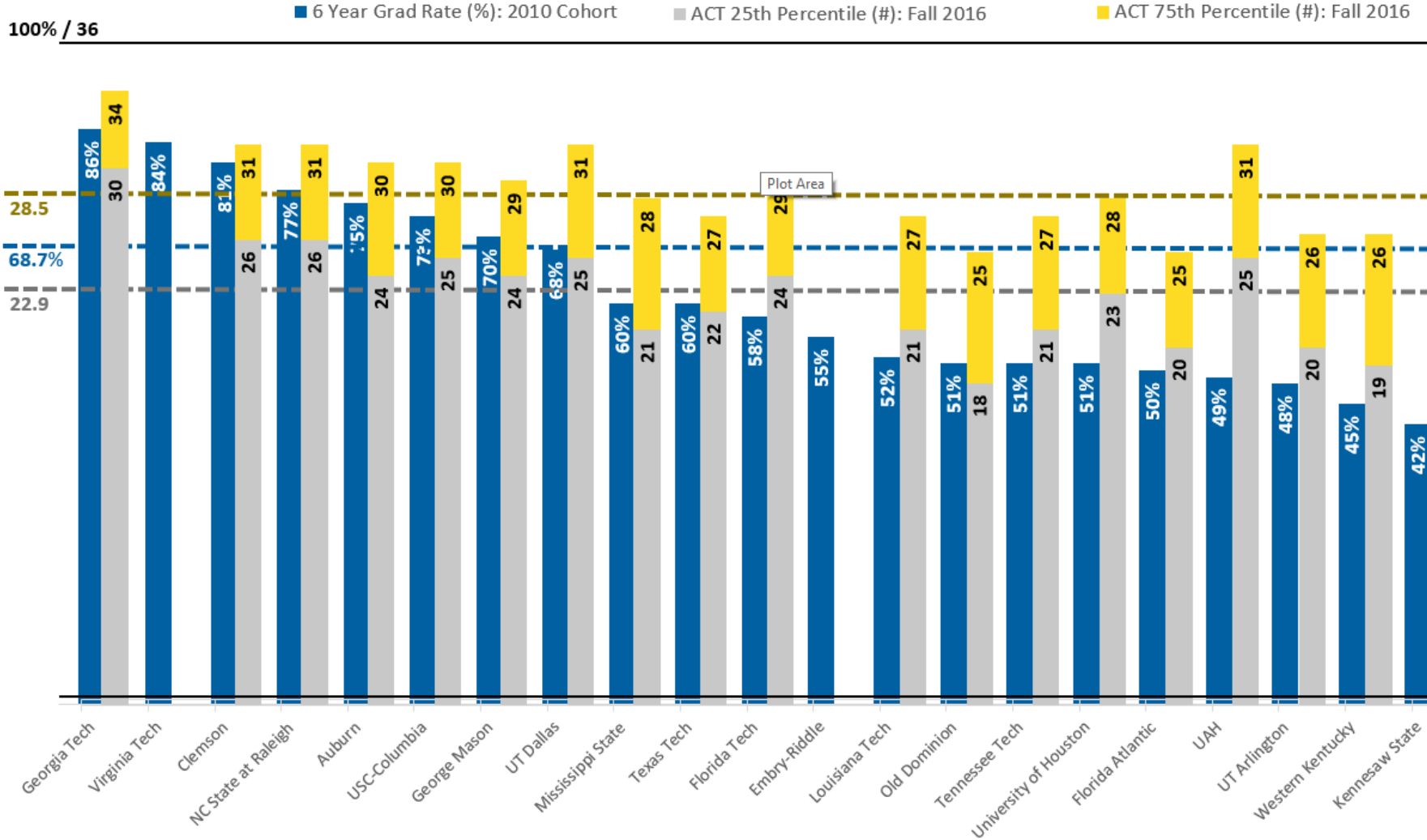
JOB NUMBER 17951	REV. NO. REVISION DATE	SHEET TITLE UPPER FLOOR PLAN - ADDITION
DATE DRAWN CHECKED	_____ _____ _____	SHEET NUMBER A-1.10

US News Rank



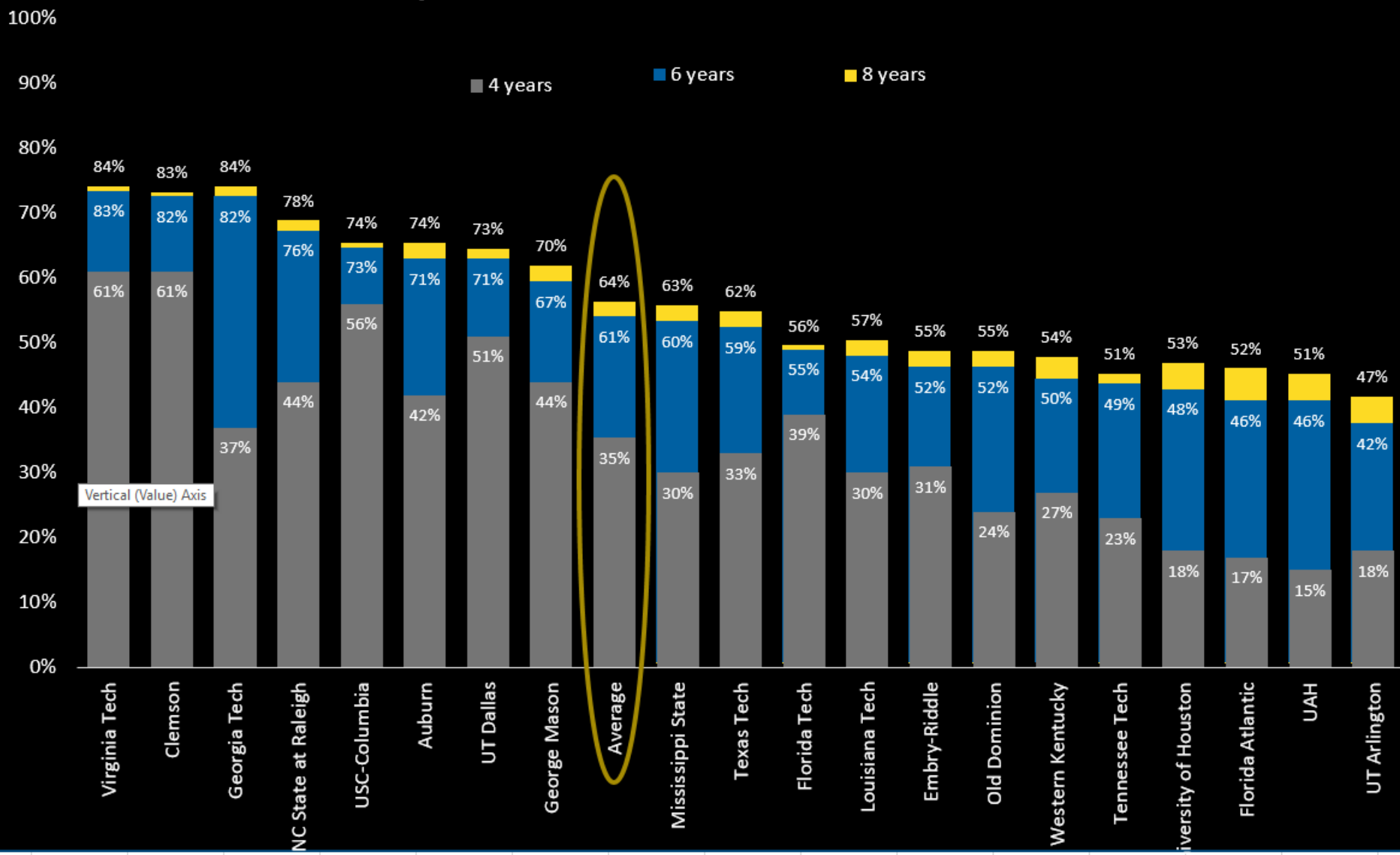
	6 Year Grad Rate (%): 2010 Cohort	Difference in SACSCOC 6 yr Peer Avg of 68.7%*
Georgia Tech	86%	17.30%
Virginia Tech	84%	15.30%
Clemson	81%	12.30%
NC State at Raleigh	77%	8.30%
Auburn	75%	6.30%
USC-Columbia	73%	4.30%
George Mason	70%	1.30%
UT Dallas	68%	-0.70%
Mississippi State	60%	-8.70%
Texas Tech	60%	-8.70%
Florida Tech	58%	-10.70%
Embry-Riddle	55%	-13.70%
Louisiana Tech	52%	-16.70%
Old Dominion	51%	-17.70%
Tennessee Tech	51%	-17.70%
University of Houston	51%	-17.70%
Florida Atlantic	50%	-18.70%
UAH	49%	-19.70%
UT Arlington	48%	-20.70%
Western Kentucky	45%	-23.70%
Kennesaw State	42%	-26.70%
*UAH SACSCOC 6yr Grad Rate 66.3%		

Graduation Rate with ACT 25th & 75th Percentile Comparison for Peer Institutions (Dual Scales)



Graduation Rates

Comparison for Peer Institutions: 2008 Cohort



Vertical (Value) Axis

4	78
ALABAMA A & M UNIVERSITY	2
ARKANSAS STATE UNIVERSITY	1
ATHENS STATE UNIVERSITY	8
AUBURN UNIVERSITY	8
AUBURN UNIVERSITY AT MONTGOMERY	2
CUMBERLAND UNIVERSITY	2
EASTERN FLORIDA STATE COLLEGE	1
EXCELSIOR COLLEGE	1
FLORIDA STATE UNIVERSITY	1
HERZING UNIVERSITY-BIRMINGHAM	2
INDIANA STATE UNIVERSITY	1
MIDDLE TENNESSEE STATE UNIVERSITY	7
MONTANA STATE UNIVERSITY - BOZEMAN	1
NEW MEXICO STATE UNIVERSITY-MAIN	2
RASMUSSEN COLLEGE	1
ROBERT MORRIS UNIVERSITY	1
SAVANNAH COLLEGE OF ART AND DESIGN	1
SOUTHERN BAPTIST THEOLOGICAL SEMINARY	1
SYRACUSE UNIVERSITY	1
TENNESSEE TECHNOLOGICAL UNIVERSITY	2
THOMAS EDISON STATE UNIVERSITY	1
TROY UNIVERSITY	1
UNIVERSITY OF ALABAMA	4
UNIVERSITY OF ALABAMA BIRMINGHAM-TRADITIONAL	10
UNIVERSITY OF HOUSTON	1
UNIVERSITY OF IOWA	1
UNIVERSITY OF KENTUCKY	1
UNIVERSITY OF LOUISVILLE	1
UNIVERSITY OF MONTEVALLO	2
UNIVERSITY OF NEW ORLEANS	1
UNIVERSITY OF NORTH ALABAMA	2
UNIVERSITY OF NORTH TEXAS	1
UNIVERSITY OF SOUTH ALABAMA	1
UNIVERSITY OF TENNESSEE CHATTANOOGA	3
UNIVERSITY OF TEXAS ARLINGTON	1
UNIVERSITY OF WEST ALABAMA	1

What is it not?

- Take jobs before they graduate:
 - No, transferring somewhere else and graduating from somewhere
 - Other institutions similarly situated have good graduation rates
- Leave for financial reasons:
 - No, transferring and covering whatever it costs at receiving institution
- Leave because of poor academic standing
 - No, eligible to transfer
- Poor incoming ACT and HSGPA
 - No, ACT and HSGPA similar to institutions with high graduation rates
- Going back home
 - No, no apparent correlation found
- Wanting degrees we do not offer
 - True in some cases but not predominant

“It takes a university” to retain students and help them persist to graduation:

- Student Success Center
 - Tutoring, online tutoring and academic coaching
 - PASS
 - Writing Center
- Collaborative Learning Center
 - Collaborative learning faculty grants
 - Collaborative learning in the classroom
- Improvements in Disability Student Services and Testing Center
- Improved Exploratory Advising and developing a sense of community through advising for “General College” students
- Student-centered FYE located in colleges
- Increased student life activities during the week and weekends
- Increased student engagement in colleges through student clubs and college/student-centric activities
- Increased number and diversity of majors
- Math/Physics/Engineering curriculum task force
- Increased tutoring in disciplines: for example, mathematics, chemistry, physics and recitation sections in Biological Sciences
- Deans’ Scholars and peer mentors in Engineering
- Departmental and faculty-led initiatives
- Engagement of the Library staff with students through increased educational experiences, multimedia laboratory, and soon 3-D printer maker laboratory and Saturday programming.
- Printer kiosks for students throughout campus
- English language assistance for undergraduate Nursing students and international undergraduate and graduate students



THE UNIVERSITY OF
ALABAMA IN HUNTSVILLE