



THE UNIVERSITY OF
ALABAMA IN HUNTSVILLE

Agenda

- University Park
- Smoking Policy
- Postdoc Policy
- ID Badges
- Four-day Workweek in Summer
- Policy on Policies
- Policy Website

**UAH Athletics
Complex**

Saundralane Dr NW

**University
Park**

University Park

14 Cr 5

UNIVERSITY PARK-ACCESS

- Open to public as a park
- East entrance to be closed to vehicular traffic
- Small lighted parking west of east entrance closure
- East entrance to be open to foot/bicycle traffic
- West entrance from campus open to vehicular traffic
- Foot/bicycle paths to/from campus on Park west edge
- Open parking for visitors/UAH permit required for faculty/students/staff



UNIVERSITY PARK-SAFETY

- Patrolled by UAH Police



- Surveillance cameras to be installed
- Vehicular entrance from campus would discourage unwanted visitors
- Hazards to vehicular/foot/bicycle traffic to be mitigated

UNIVERSITY PARK-USE

- Playgrounds, playing fields, picnic areas
- Riggs and Setzer Fields retain names
- UAH intramurals, athletic camps, athletic team practice, group gatherings/picnics
- Noise levels held to Huntsville Code of Ordinances, Article V. Noise
- Develop parking plan; possibly return some parking to green space



- Smoking Policy
 - Prohibits electronic cigarettes in buildings
- Postdoc Policy
 - Postdocs considered students; do not contribute to State Retirement System
- ID Badges
 - Proposed by Staff Senate; strongly encouraged to wear

The University of Alabama in Huntsville Potential Summer Flex Schedule

Staff Senate passed a resolution, 21 Yes, 2 No, in support of a four-day work week in the summer.

HR drafted a possible four-day flex schedule for summer months:

- University closed on Friday for normal business operations
- Certain departments would/would need to work a 5-day, 40-hour workweek

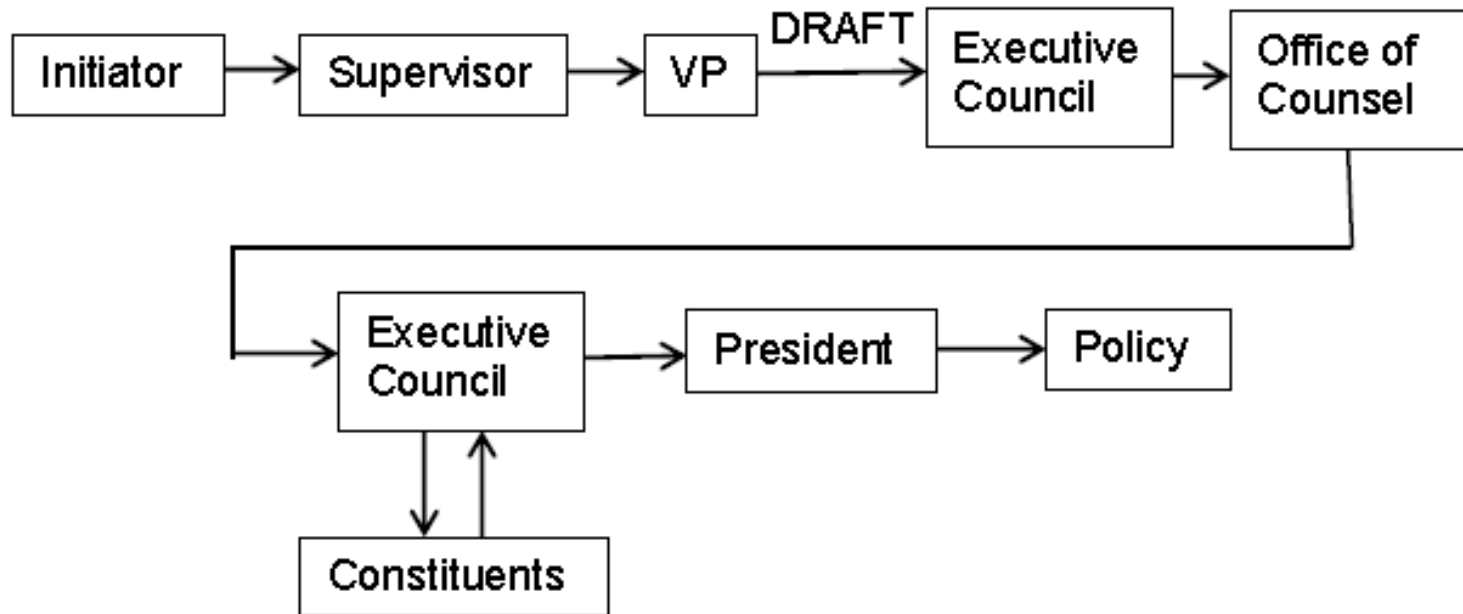
Work Schedule:

- Overtime based on 40 hours per workweek
- 4 ten-hour days, including lunch (<40 work hours)
- Core hours when all employees must be present, e.g., 9:00 am to 4:00 pm
- Individual employee start and stop times vary

Leave and Holidays:

- Vacation, sick, and personal leave based on a 10-hour day
- Change observance of July 4, 2015 (Saturday) to July 2 (Thursday) rather than July 3 (Friday)

- Policy on Policies (General process)



- Policy on Policies
 - Codify process
 - Consistent formatting
 - Four drafts
 - July 28, 2014
 - August 22, 2014
 - August 26, 2014
 - December 15, 2014
- Policy Website