

The OLLI Insider

News For Members of the Osher Lifelong Learning Institute at UAH

Est. in 1993 as the Academy for Lifetime Learning, Inc. at UAH

P.O. Box 1581, Huntsville, AL 35807

256-824-6959

www.osher.uah.edu

Email: OLLI@uah.edu

July/August 2012

SES Tours, Summer 2012



REDSTONE ENERGY GROUP TOUR

Twenty-eight OLLI members toured a Redstone Energy Group Installation to learn about proven energy production technology in contrast to cutting-edge technology.

Bill McAllister organized this first tour of the series.

International Intermodal Center Tour

OLLI visited the International Intermodal Center (IIC) located on the east side of the airport on July 27, 2012. The group was guided by the IIC director, Mitch Bradley. OLLI members learned about how products are transferred between truck and rail and how goods are delivered to European and Asian markets by this unique transportation hub. The group boarded the new Boeing aircraft that transports goods from Huntsville to world markets twice weekly. Pictures will appear in the next newsletter.

Trends and New Technology in Health Care Tour

The tour took place on Tuesday, July 31, 2012, at the Dowdle Center near Huntsville Hospital, 109 Governors Drive SE, from 8:30 a.m. to 12:30 p.m. During the opening session, attendees were briefed by a member of Huntsville Hospital's Executive Leadership Team on trends impacting health care, specifically senior adults. Additional briefings spotlighted new technology in areas of interest to senior adults, including stroke, heart health, diabetes, orthopedics, and advances in the treatment of hearing loss. A short walking tour of the hospital's main interest points took place afterwards.

From the President

OLLI Tuition Increase and SES Program



Chuck Duffy, President

OLLI at UAH is poised to begin its 20th year in September 2012. All classes have been scheduled, and the catalog will go into the mail in mid-August. If you have been reading about the Alabama state budget, you are aware that the budgets of the Alabama Universities, including UAH, have been CUT by 20%.

Tuition increases for students have been increased accordingly, and all departments are making cuts, including staff. In this climate, Professional and Continuing Services (PCS) has announced an increased tuition of \$85 for OLLI, effective this fall term. This \$85 is for up to six courses per term. The OLLI board has expressed its concern to PCS about possible effects on our membership, but I hope that our program and social activities will continue to appeal to all of our members.

The SES program for this summer is underway, and it includes a mixture of visits to area activities from power to hospitals to beer brewing. Check the schedule and sign up. Attendance is limited for some of the events.

Keep cool in this north Alabama summer heat.



Mike Doyle, Chair

Curriculum is defined as the aggregate of courses of study given in a school, college, or university. So, what is the Osher Lifelong Learning Institute (OLLI) curriculum? Ask many people, you'll receive many answers. The OLLI curriculum offers something different to everybody. Think about it! I can satisfy my quest for knowledge in a number of different ways—language, literature, thought processes, my life, the Civil War, and World War II. All these subjects are available, as are many others. What makes the OLLI curriculum so very interesting is the variety of perspectives in its courses and its subjects.

I invite you to take some courses that challenge you, whether they are in history, cooking, or hiking. There is something for everyone. And if you don't find subjects that you like, tell somebody about it. Volunteer to teach a class. Volunteer to find information about a class that you want. It is your life. Make the most of it, and keep your intellect challenged.

Remember these dates:

17 August, Pre-Registration event

20 August, begin registration

10 September, classes begin

Find subjects that enlighten and perspectives that will challenge your beliefs.

The Truly Educated Never Graduate

OLLI Membership! Free OLLI Holiday Party Tickets!

What do membership in OLLI and free OLLI Holiday Party tickets have in common?

Do you know someone who has an interest in continuing their learning? Then OLLI is the right place for them. Plus, you could win two (2) tickets to the OLLI Holiday Party. For every new member for 2012-2013 that you bring to OLLI between June 1 and November 1, your name will go into a drawing for two (2) OLLI Holiday Party tickets. However, make sure that your friends put *your* name on their membership form. The more new members that you bring in, the more chances that you have to win the tickets! Visit our website at www.osher.uah.edu to join online, or print the membership form on the last page of this newsletter and mail it in.

You must might be our winner!

Blue Pants Brewery Tour

OLLI will tour the Blue Pants Brewery, 500 Lanier Dr., Building 1, Suite A, in Madison, AL (behind the Walmart Shopping Center on Madison Boulevard) on Friday, August 3, 1:30-3:00 p.m. Brewmaster and president Mike Spratley will give a 30-minute tour of the facility followed by a video that chronicles the brewery's growth over the last year. Then, the taproom will be open for sampling beers and snacks. A ticket for sampling can be purchased for \$3 before the tour. After the visit, the taproom will be open at 3:00 p.m. to enjoy beer with other customers at the usual taproom price of \$5/pint. Tour size is limited to 50, first-come, first-served. Additional tours may be scheduled. Call 256-679-0233 or email bpbrew@gmail.com for reservations. Also visit the taproom on Thursdays, 3:00-8:00 p.m., and Fridays and Saturdays, 3:00-10:00 p.m. Someone there is usually anxious to give a tour.

Redstone Energy Group Tour Images



Thanks to OLLI Insider assistant Mable Gordon for assuring that articles in this issue have wonderful photographs. Thanks to all photographers as well.



Photo credit: Bill McAllister



Come join OLLI for our Back-To-School Event
August 17, 2012

1:30 - 3:30 P.M.

Wilson Hall Room 152

Happenings:

Meet some of the instructors for the fall term. They will be giving brief overviews of their classes.



Be the first to hear the winners of the OLLI photo contest.

Enjoy the refreshments provided while socializing with other OLLI members.



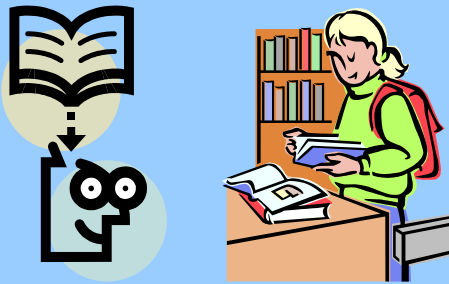
Fill out registration forms for the fall classes.

For more information or questions contact Sue Chatham at 256-461-0262, Mike Doyle at 256-772-8148, or Bill Johnson at 256-701-6490.

OLLI Members and the UAH Library

The UAHuntsville Salmon Library's "Most Recently Asked Questions" feature included the question: "What privileges do I have as an OLLI member?"

OLLI sends the library a weekly list of its members. If you are on the list (i.e. a current member) and want to use the Salmon Library, you will be asked to pay \$10 for a 3-month period. This \$10 fee grants you the privileges of checking out books (5 books for 28 days with 1 renewal) and using the library computers.



<http://lib.uah.edu>

New Board Member



Gratia Mahony moved from Dayton, Ohio, to Huntsville in January 2011. A graduate of the University of Wisconsin and a history major, she has been a professional genealogist since 1976, and has served on the board of directors or as a lecturer with many genealogical and historical organizations.



Gratia Mahony

Active in the OLLI program at the University of Dayton, Gratia quickly joined OLLI at UAHuntsville and continued teaching genealogy courses.

Gratia's avocation is gardening. She is busily creating new gardens around the home where she lives with her son and daughter-in-law. When not involved with genealogy or gardening, she may be off on a traveling adventure.

Gratia was elected by the Board of Directors to complete the term of Hugh Nicholson, who resigned in May 2012.

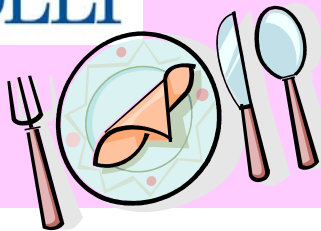


Cultural Committee

The Cultural Committee is busy planning events for the coming year. We will feature programs in coordination with the Huntsville Symphony Orchestra performances, the exhibits at the Huntsville Museum of Art, and the New York Metropolitan Opera HD Live performances. In addition, we will have a lecture by a UAHuntsville Shakespeare scholar in connection with live performances by The American Shakespeare Center on Tour to be held on campus in February 2013.

Our committee will have a brainstorming meeting in late August or early September. We would love to have your ideas and your volunteer time. If you would like to join the Cultural Committee, contact Eleanor Schweinsberg at 256-883-0602.

Submitted by Eleanor Schweinsberg, Chair



OLLI Picnic: A 'Hot' Success



Photo credit (all images above): Thurman Gordon

The warmth and sun of June 13, 2012, did not alter the picnic, fellowship, card play, or hiking of OLLI members who attended the annual picnic held at Green Mountain. As the photos attest, food and fun won out over heat.

And after lunch, Bob Goodwin led an exhilarating hike.

Photo credit: Bob Goodwin



OLLI Membership Form for June 1, 2012 – May 31, 2013

Name _____ Preferred Name on Badge _____

Street Address _____

City/State/Zip _____

Phone _____ Cell Phone _____ Email _____

Please send OLLI Newsletters via: E-mail [] Please send OLLI Newsletters via Postal Service: []

Do you want to receive E-mail messages about OLLI activities? Yes [] No []

Join the Osher Lifelong Learning Institute (OLLI) at UAH by mailing this form and a check for \$15, payable to: Osher Lifelong Learning Institute at UAH.

MAIL TO: Osher Lifelong Learning Institute at UAH
P.O. Box 1581, Huntsville, AL 35807
PHONE: 256-824-6959

If referred by an individual, please list their name _____

The Osher Lifelong Learning Institute at UAH is not responsible for any damage or personal injury sustained when a member is participating in any OLLI sponsored activities on or off the UAH Campus.

Membership implies permission to use your photo for OLLI publicity. If you do not want your photo used, please notify the instructor/photographer in advance.

Membership: \$15

Scholarship Fund: * _____

Total Enclosed: _____

Date: _____

New Membership []

Gift Membership Yes [] No []

Gift From _____

*If you would like to make a contribution to the OLLI Scholarship Fund for a UAHuntsville student, please include the additional amount you are donating in your check.

**Important Notice: Inputs for the September 2012 Newsletter are due by August 21, 2012.
Please send articles and ideas to Joyce Pettis, Editor; Lorrie White, Co-editor, at OLLInewsletter@msn.com.**



Osher Lifelong Learning Institute
at the
University of Alabama in Huntsville
Wilson Hall, Room 151
Huntsville, AL 35899

Non-Profit Org.
U.S. Postage
PAID
Huntsville, Al.
35899
Permit No.