



FACILITIES & OPERATIONS

DIGITAL TASK CHAIR CATALOG 2024



**** To schedule an appointment in the chair lab, please contact Alyssa Newton, Alyssa.Newton@uah.edu.**

About this document:

Facilities & Operations is pleased to provide this digital catalog of preapproved task chairs.

These chairs cover a wide range of features & costs. Chairs 1-10 are handled through UAH's purchase order process (from various vendors), while 11 & 12 are ordered directly from the Staples Advantage website.

All chairs featured in this catalog have 300 lb. (or higher) weight rating, along with 12-year (or longer) warranty.

Our goal with implementing these quality standards is to make better use of funds by identifying chairs that would have a long lifespan.



1



Chair Details:

Brand: Humanscale

Model: Liberty

Manufactured: USA

Features: Contoured mesh back, seat slider, user-friendly controls

Warranty: 15 years

Weight Limit: 400 lbs.

Arms: Adjustable w/ cleanable soft arm caps (black)

Back: Black Mesh

Seat: Black Polyurethane (high durability faux leather)

Base & Frame: Black

Delivery: Included

Assembly: Included

Apprx. Lead Time: Min. 6 weeks

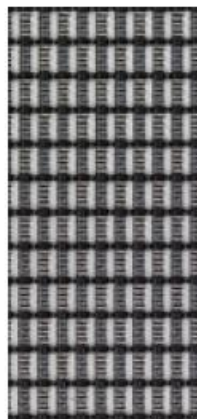
Cost on Contract: Apprx. \$810 (as listed)

SUBMIT ORDER
REQUEST

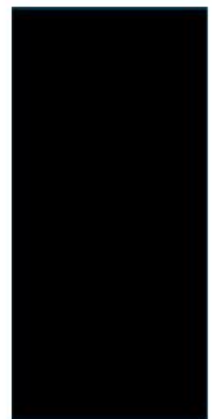


ALL PHOTOS ARE STOCK IMAGERY. PLEASE VISIT THE CHAIR LAB FOR THE MOST ACCURATE VIEWING EXPERIENCE.

MESH BACK



BASE & FRAME

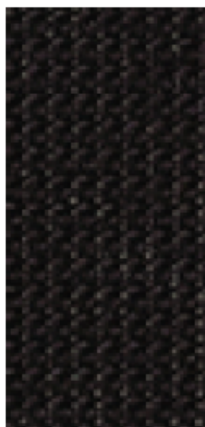


[PRODUCT BROCHURE LINK](#)



ALL PHOTOS ARE STOCK IMAGERY. PLEASE VISIT THE CHAIR LAB FOR THE MOST ACCURATE VIEWING EXPERIENCE.

MESH BACK



SEAT MATERIAL



BASE & FRAME



[PRODUCT BROCHURE LINK](#)



Chair Details:

Brand: Sit On It

Model: Hexy (Midback)

Manufactured: USA

Features: Contoured back w/ flexible mesh, seat slider

Warranty: Limited Lifetime

Weight Limit: 300 lbs.

Arms: Height and width adjustable, flexible black arm caps

Back: Black Mesh

Seat: Black Polyurethane (high durability faux leather)

Base & Frame: Black

Delivery: Included

Assembly: Included

Apprx. Lead Time: Min. 6 weeks

Cost on Contract: Apprx. \$350 (as listed)

SUBMIT ORDER
REQUEST

3



Chair Details:

Brand: Haworth

Model: Soji

Manufactured: USA

Features: Contoured back, adjustable lumbar, seat depth adjustment

Warranty: 12 years

Weight Limit: 325 lbs.

Arms: "4D" adjustability, soft black arm caps

Back: Black Mesh

Seat: Black Polyurethane (high durability faux leather)

Base & Frame: Black

Delivery: Included

Assembly: Included

Apprx. Lead Time: Min. 6 weeks

Cost on Contract: Apprx. \$750 (as listed)

SUBMIT ORDER
REQUEST



ALL PHOTOS ARE STOCK IMAGERY. PLEASE VISIT THE CHAIR LAB FOR THE MOST ACCURATE VIEWING EXPERIENCE.

MESH BACK



SEAT MATERIAL



BASE & FRAME



PRODUCT BROCHURE LINK



ALL PHOTOS ARE STOCK IMAGERY. PLEASE VISIT THE CHAIR LAB FOR THE MOST ACCURATE VIEWING EXPERIENCE.

MESH BACK



SEAT MATERIAL



BASE & FRAME



[PRODUCT BROCHURE LINK](#)

4



Chair Details:

Brand: Haworth

Model: Fern

Manufactured: USA

Features: High back, adjustable lumbar, executive style

Warranty: 12 years

Weight Limit: 325 lbs.

Arms: "4D" adjustability, soft black arm caps

Back: Black Mesh

Seat: Black Polyurethane (high durability faux leather)

Base & Frame: Black

Delivery: Included

Assembly: Included

Apprx. Lead Time: Min. 6 weeks

Cost on Contract: Appx. \$1150 (as listed)

SUBMIT ORDER
REQUEST



ALL PHOTOS ARE STOCK IMAGERY. PLEASE VISIT THE CHAIR LAB FOR THE MOST ACCURATE VIEWING EXPERIENCE.

MESH BACK



SEAT MATERIAL



BASE & FRAME



[PRODUCT BROCHURE LINK](#)



Chair Details:

Brand: Allseating

Model: You Too

Manufactured: Canada

Features: Height adjustable
"ratchet" back, adjustable lumbar,
seat slider

Warranty: 12 years

Weight Limit: 350 lbs.

Arms: Height & width adjustable,
soft black arm caps

Back: Black Mesh

Seat: Black Polyurethane (high
durability faux leather)

Base & Frame: Black

Delivery: Included

Assembly: Included

Apprx. Lead Time: Min. 6 weeks

Cost on Contract: Apprx. \$650 (as
listed)

SUBMIT ORDER
REQUEST

7



Chair Details:

Brand: Allseating

Model: Eighty Two Midback

Manufactured: Canada

Features: Contoured back, adjustable lumbar, seat depth adjustment

Warranty: 12 years

Weight Limit: 325 lbs.

Arms: Height & width adjustable, black arm caps

Back: Black Mesh

Seat: Black Polyurethane (high durability faux leather)

Base & Frame: Black

Delivery: Included

Assembly: Included

Apprx. Lead Time: Min. 6 weeks

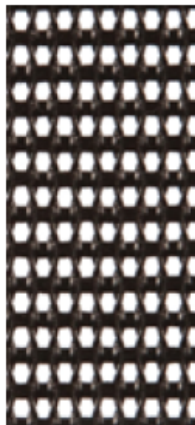
Cost on Contract: Appx. \$400 (as listed)

SUBMIT ORDER
REQUEST



ALL PHOTOS ARE STOCK IMAGERY. PLEASE VISIT THE CHAIR LAB FOR THE MOST ACCURATE VIEWING EXPERIENCE.

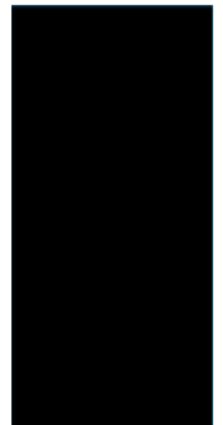
MESH BACK



SEAT MATERIAL



BASE & FRAME



PRODUCT BROCHURE LINK

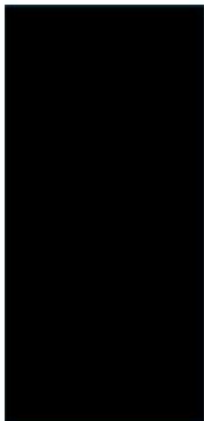


ALL PHOTOS ARE STOCK IMAGERY. PLEASE VISIT THE CHAIR LAB FOR THE MOST ACCURATE VIEWING EXPERIENCE.

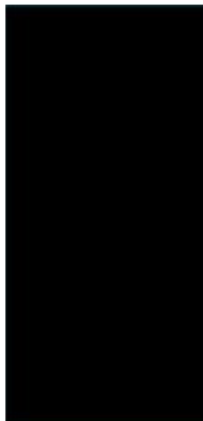
MESH BACK



SEAT MATERIAL



BASE & FRAME



[PRODUCT BROCHURE LINK](#)

8



Chair Details:

Brand: 9to5 Seating

Model: Strata

Manufactured: USA

Features: Contoured back, adjustable lumbar, seat slider

Warranty: 12 years

Weight Limit: 350 lbs.

Arms: Height & width adjustable, black arm caps

Back: Black Mesh

Seat: Black Polyurethane (high durability faux leather)

Base & Frame: Black

Delivery: Included

Assembly: Included

Apprx. Lead Time: Min. 6 weeks

Cost on Contract: Apprx. \$650 (as listed)

SUBMIT ORDER
REQUEST

9



Chair Details:

Brand: Steelcase

Model: Leap

Manufactured: Mexico

Features: User-friendly controls, contoured upholstered back, lumbar adjustment, back tension adjustment, seat depth adjustment, executive style

Warranty: 12 years

Weight Limit: 400 lbs.

Arms: "4D" adjustability, with soft back arm caps

Back: Black Mesh

Seat: Black Polyurethane (high durability faux leather)

Base & Frame: Black

Delivery: Included

Assembly: Included

Apprx. Lead Time: Min. 6 weeks

Cost on Contract: Appx. \$1350 (as listed)

SUBMIT ORDER
REQUEST



ALL PHOTOS ARE STOCK IMAGERY. PLEASE VISIT THE CHAIR LAB FOR THE MOST ACCURATE VIEWING EXPERIENCE.

UPHOLSTERED
BACK



SEAT MATERIAL



BASE & FRAME



PRODUCT BROCHURE LINK



Leap Plus features an 18% larger seat and 12% larger back, thicker and wider seat cushion, high-pressure cylinder, wider diameter base to meet the needs of larger users.

Chair Details:

Brand: Steelcase

Model: Leap Plus

Manufactured: Mexico

Features: User-friendly controls, contoured upholstered back, lumbar adjustment, back tension adjustment, seat depth adjustment, executive style

Warranty: 12 years

Weight Limit: 500 lbs.

Arms: "4D" adjustability, with soft back arm caps

Back: Black Mesh

Seat: Black Polyurethane (high durability faux leather)

Base & Frame: Black

Delivery: Included

Assembly: Included

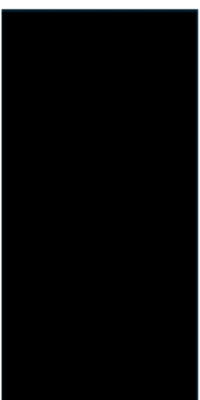
Apprx. Lead Time: Min. 6 weeks

Cost on Contract: Appx. \$1950 (as listed)

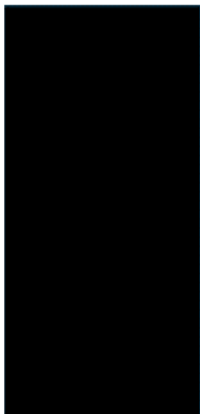
PRODUCT BROCHURE LINK

ALL PHOTOS ARE STOCK IMAGERY. PLEASE VISIT THE CHAIR LAB FOR THE MOST ACCURATE VIEWING EXPERIENCE.

UPHOLSTERED
BACK



SEAT MATERIAL



BASE & FRAME



SUBMIT ORDER
REQUEST



Chair Details:

Brand: HON

Model: Ignition 2, Mid-Back

Manufactured: USA

Features: Contoured back, adjustable lumbar

Warranty: Limited Lifetime

Weight Limit: 300 lbs.

Arms: Height & width adjustable

Back: Black Mesh

Seat: Black Polyurethane (high durability faux leather)

Base & Frame: Black

Delivery: Included

Assembly: Excluded

Apprx. Lead Time: 10-15 days

Price from Staples Advantage:

Apprx. \$425 (as listed)

ALL PHOTOS ARE STOCK IMAGERY. PLEASE VISIT THE CHAIR LAB FOR THE MOST ACCURATE VIEWING EXPERIENCE.

MESH BACK



SEAT MATERIAL



BASE & FRAME



[PRODUCT BROCHURE LINK](#)

PURCHASE AT
STAPLES