



## Orienting your board

### Introduction

If you press the SMART Board™ interactive whiteboard with your finger and your cursor appears somewhere other than where you're pressing, try orienting the interactive whiteboard.

Use this guide to learn:

- What is orientation?
- When is orientation needed?
- How to orient your interactive whiteboard

### What is orientation?

Orientation **ensures your touch is registered accurately** when using the interactive whiteboard. The orientation process communicates to the computer where the working area is displayed on the interactive whiteboard.

### When is orientation needed?

You'll need to orient your interactive whiteboard:

- **During initial setup**  
Orientation is needed before you can use the interactive whiteboard to control applications.
- **If the projector or interactive whiteboard is moved**  
Orientation is needed each time the projector or interactive whiteboard change location.
- **If the cursor doesn't appear where you're pressing**  
Orientation is needed if your cursor appears somewhere other than where you're pressing on the interactive whiteboard.
- **If the board is connected to a different computer**  
Orientation is needed whenever you connect it to a new or different computer.



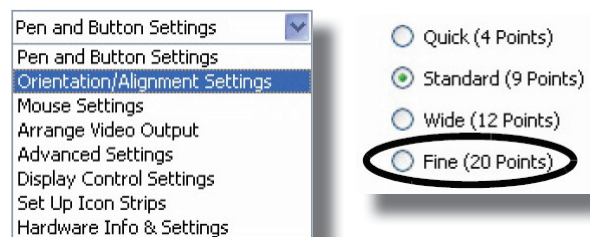
### How to orient your interactive whiteboard

To orient the interactive whiteboard:

1. Press and hold the **Keyboard** and **Right Mouse** buttons on the pen tray simultaneously until the Orientation screen appears
2. Press the pen firmly near each target, indicated by the white, diamond shaped graphic
3. Maintain constant pressure as you **drag the tip** of the pen to the center of the target
4. Once you've reached the target point, **release your pen** from the surface of the interactive whiteboard. The orientation point isn't registered until you release your touch.
5. Repeat for each target point on the screen

When you've set all orientation points, the orientation screen disappears and you're ready to use your interactive whiteboard.

### Increasing the detail of calibration



1. Press the **SMART Board** icon in the notification area
2. Select **Control Panel** from the *SMART Board Tools* menu
3. Press the **SMART Hardware Settings** button. The *SMART Hardware Settings* window opens.
4. Select **Orientation/Alignment Settings** from the drop-down menu
5. Select **Fine (20 Points)**
6. Press **OK** to apply the new orientation and alignment settings
7. Press the **Orient** button in the *Control Panel* window to begin the orientation process

## Practice: What would you do?



You've been asked to deliver a training session in a room that has a SMART Board interactive whiteboard. You will be the first person to use it.

Which questions will help you decide whether you should orient the interactive whiteboard?

- **Is this a new interactive whiteboard?**  
*Good question! You need to perform an orientation if the interactive whiteboard is new.*
- **Has the interactive whiteboard or the projector moved?**  
*Very good! You need to perform an orientation if the interactive whiteboard or projector has changed location.*
- **Is the cursor aligned with your finger?**  
*Excellent! You need to perform an orientation if the cursor appears at a different location than your touch.*

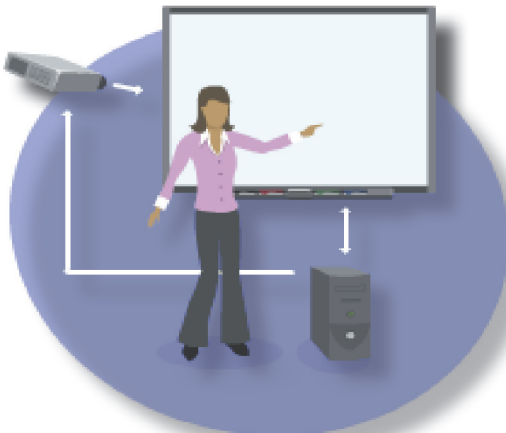
You've learned through experience that whenever technology is moved, it is a good idea to test it before you deliver a lesson or presentation.

## Practice: Would you do the same?



Tammy has used an interactive whiteboard for many years and her colleagues value her expertise. She recommends orienting the interactive whiteboard every day, sometimes several times a day.

- **Would you do the same?**  
*While Tammy isn't damaging the interactive whiteboard, it's not necessary for her to perform an orientation each day, only when there's a need for it. In normal conditions, several weeks could pass before she would need to orient the interactive whiteboard.*



## Conclusion



Let's recall what you've learned:

- **What is orientation?**
- **When is orientation needed?**
- **How to orient your interactive whiteboard**
- **How to increase the detail of calibration**

If you orient your SMART Board interactive whiteboard when necessary, you'll ensure that your touch and interaction with the interactive whiteboard is registered accurately.

