



THE UNIVERSITY OF  
ALABAMA IN HUNTSVILLE

# HOW UAH IMPACTS THE ECONOMY



- Workforce Development – 2/3 of in Eng, Sci, Bus
- Business attraction
  - Boeing R&T
  - Raytheon
  - Remington
- Business assistance
  - SBDC





# HOW UAH IMPACTS THE ECONOMY

- Research and Development
- Innovation/Entrepreneurship
  - Innovation, Commercialization, and Entrepreneurship (ICE) Lab
- Office of Technology Commercialization
  - Patenting
  - IP Marketing
  - Spin-out (startup) companies







UAH biotech startup iXpressGenes at HudsonAlpha founded by Joe Ng





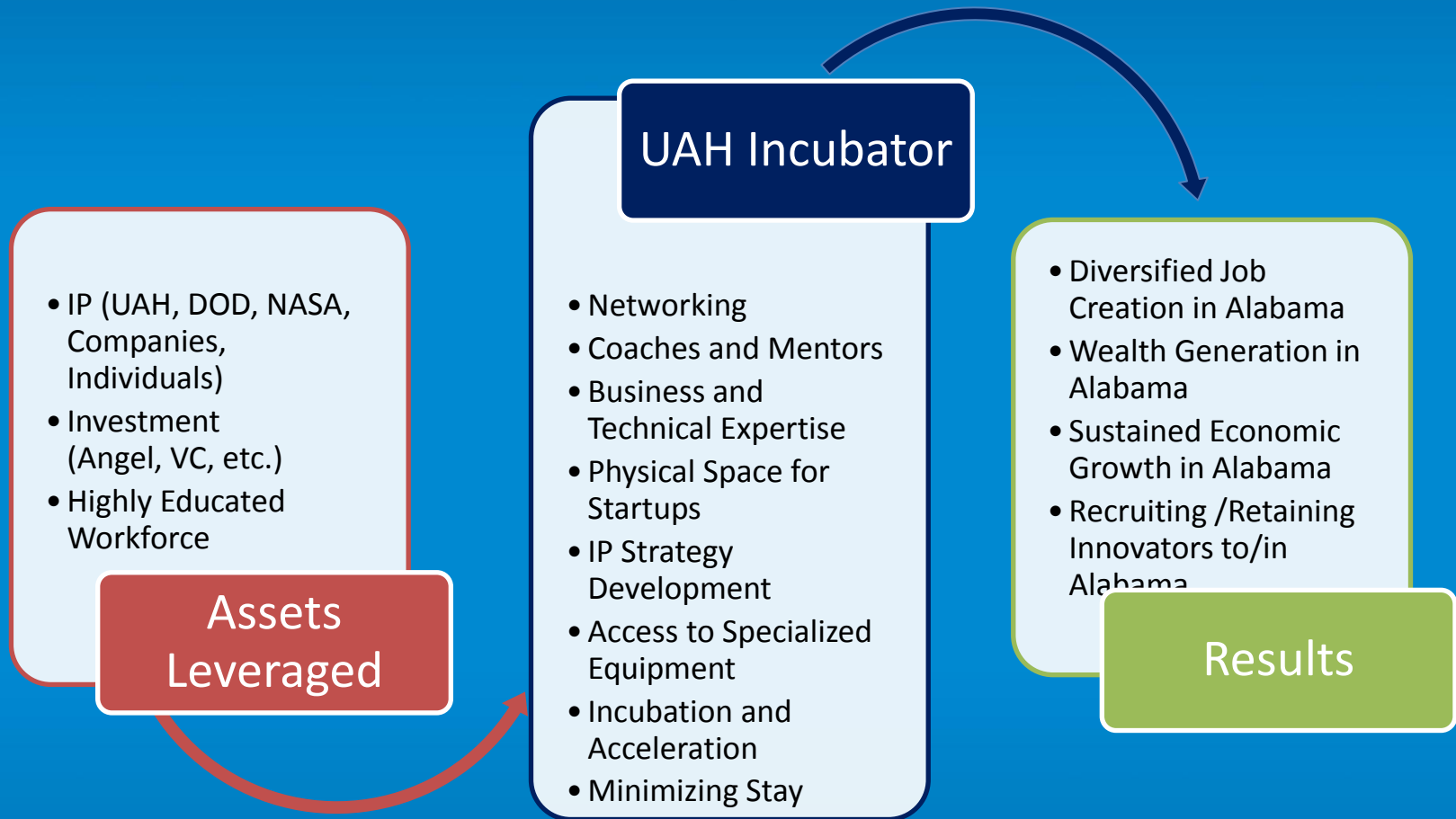
# HUNTSVILLE INCUBATORS



- HudsonAlpha - Biotech
- Lowe Mill – Arts & Entertainment
- Clinton Row – Retail
- BizTech –Technology
- Huntsville West



# A UAH INCUBATOR





# A UAH INCUBATOR

- Business plan development
- Student projects
- Faculty expertise
- Specialized equipment
- Specialized facilities
- Shared facilities/services
- All-in lease rate





# KEY DRIVERS OF SUCCESS\*

- University-linked incubator
- Being part of an active entrepreneurial community
  - Culture, people, relationships, innovation+business strategies\*\*
- High-quality training and education
- Choosing the right companies
- Being entrepreneur-centric
- Focusing on acceleration, not incubation
- Minimizing stay in incubator

\*\*Global Benchmark  
2013, UBI Index

\*Bay Area Council  
Economic Institute and  
Booz & Co., 2012





# NEIGHBORING STATES

## Florida

- University of Florida Innovation Hub
- Florida State University InNOLEvation Accelerator
- University of South Florida Tampa Bay Tech Incubator



## Georgia

- Georgia Tech Enterprise Innovation Institute
- University of Georgia BioBusiness Center
- Georgia State University CollabTech



## Tennessee

- UT Knoxville UTRF Business Incubator
- Tennessee State University Nashville Business Incubation Ctr.
- University of Memphis Fed-Ex Institute of Technology



## Mississippi

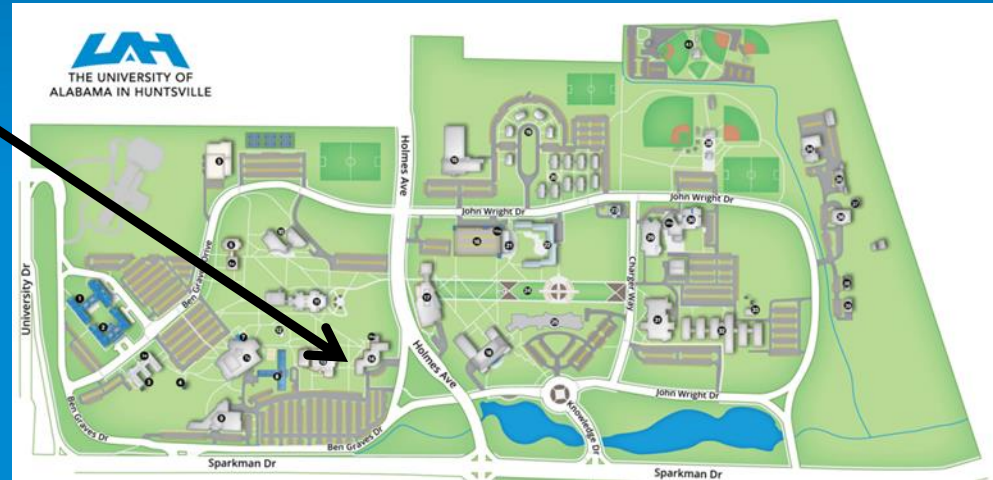
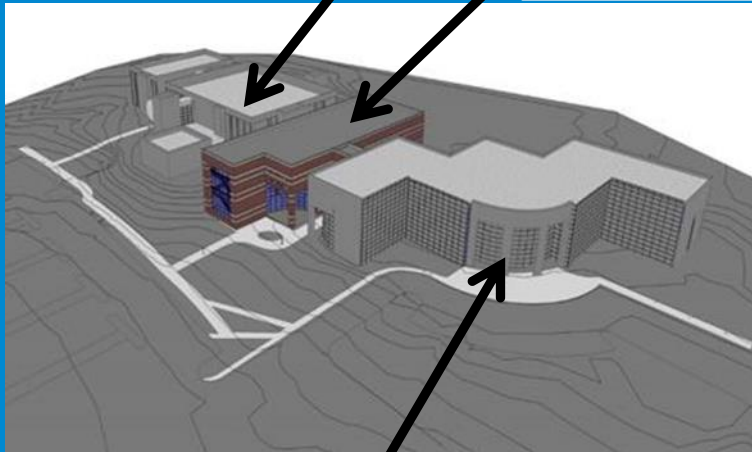
- Mississippi State University Business Incubator
- University of Mississippi Innovation Hub



# A UAH INCUBATOR

Wilson Hall

Incubator

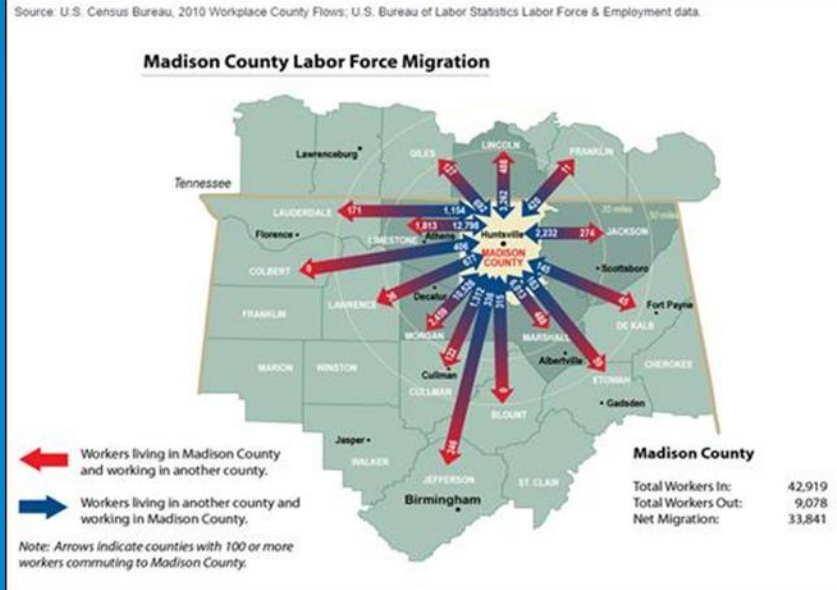


Business Administration





# A UAH INCUBATOR



- 43,000 residents from 15 counties
- Redstone has more patents applied for and issued than any other entity in the SE US
  - DoD's mission focused on warfighter; commercialization not a priority
  - No N AL ecosystem for identifying dual use technologies

- UAH has
  - Small Business Development Center
  - Office of Technology Commercialization
  - Opportunity/ability to leverage regional assets



“Army Materiel Command, UAH team up for logistics certificate program for AMC employees,” [al.com](http://al.com), *Jan 08, 2015*





# Oct 4 Honors College Launch Dinner at the Davidson Center for Space Exploration



**Nursing**

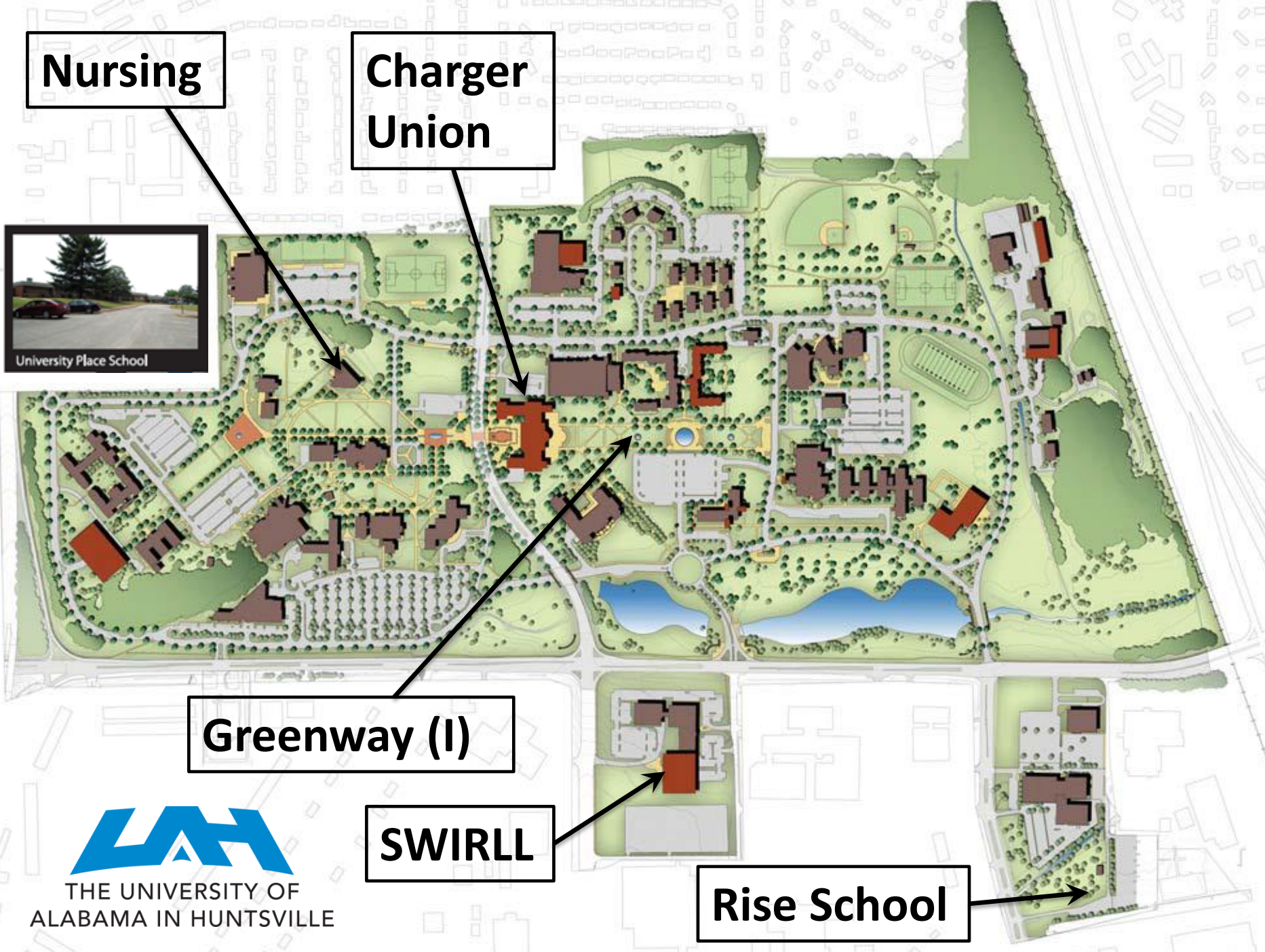
**Charger  
Union**



**Greenway (I)**

**SWIRLL**

**Rise School**

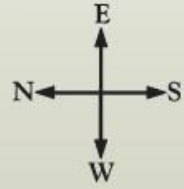




**Univ Dr Entrance**

**Holmes Ave Entrance**

-  Emergency/Assistance or "Blue Light" Phone
-  Information and Campus Maps
-  Academic Research Administration
-  Housing



**Charger Park Parking**

- |                                      |   |
|--------------------------------------|---|
| 1. North Campus Residence Hall       | 16. Intermodal Parking Facility   |
| 2. Frank Franz Hall                  | 16a. Public Safety  |
| 3. Morton Hall                       |   |
| 3a. Studio                           |   |
| 4. Union Center and Media Center     |   |
| 5. Spragin Hall                      |   |
| 6. Roberts Hall                      |   |
| 6a. Roberts Recital Hall             |   |
| 7. University Center/Admissions      | 22. Charger Village I   |
| 7a. Exhibit Hall                     | 23. Credit Union  |
| 8. Central Campus Residence Hall     | 24. University Greenway   |
| 9. Bevilacqua Center                 | 25. Madison Hall/Disability Support   |
| 10. Nursing Building                 | 26. Robert "Bud" Cramer Research Hall (National Space Science and Technology Center and NOAA Weather Forecast Center) |
| 11. Salmon Library                   | 27. Future site/SWIRLL (Severe Weather Research and Lightning Laboratory)   |
| 12. Amphitheater                     | 28. Charger Park  |
| 13. Wilson Hall                      | 29. Optics Building   |
| 13a. Wilson Theatre                  | 30. Materials Science Building  |
| 14. Business Administration Building | 30a. McDonnell Douglas Auditorium   |
| 14a. Chan Auditorium                 |   |
| 15. University Fitness Center        |   |

**Greenway (II)**

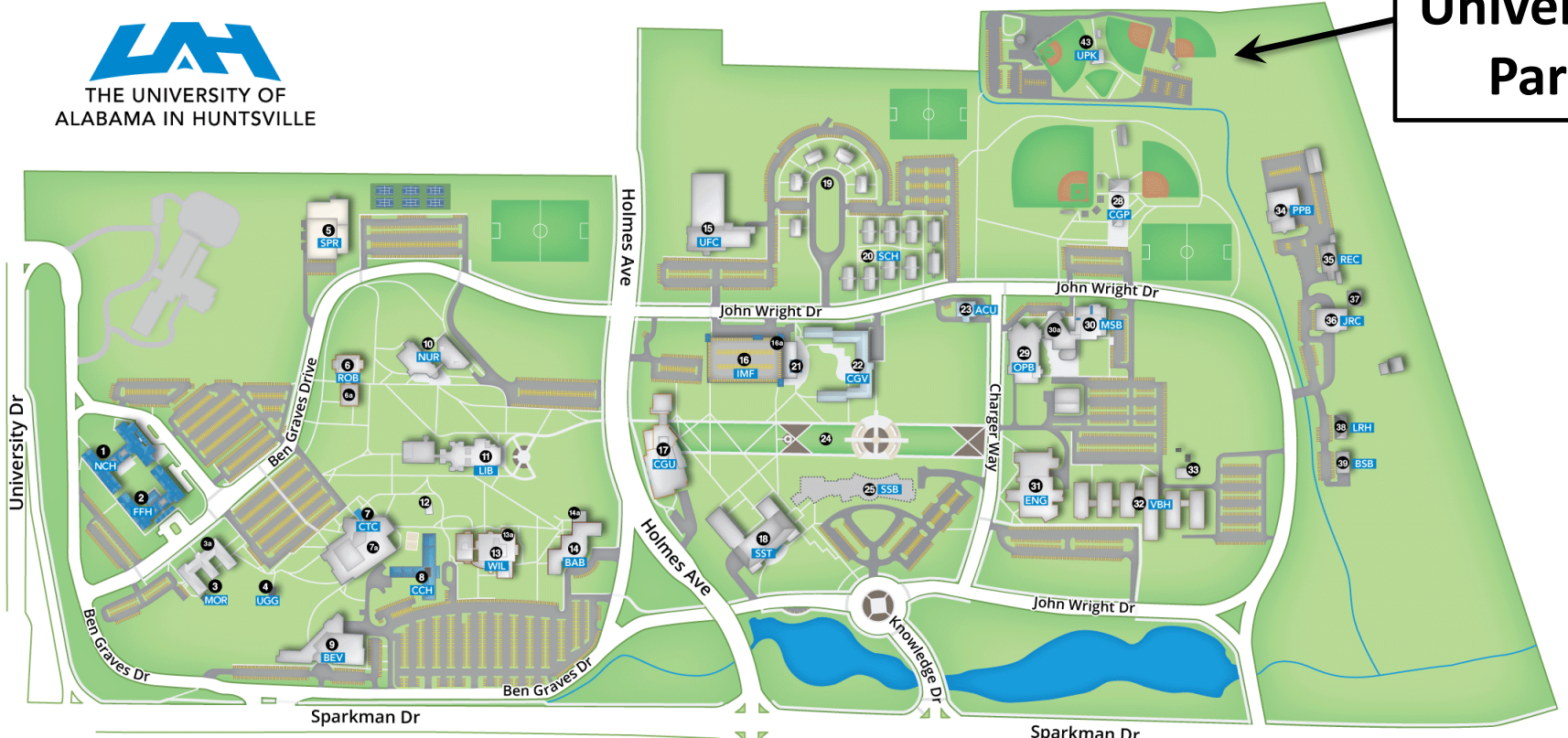
**Madison**

**Holmes Ave Entrance**

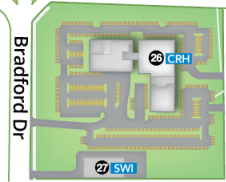


For additional information visit our website at [www.uah.edu](http://www.uah.edu)

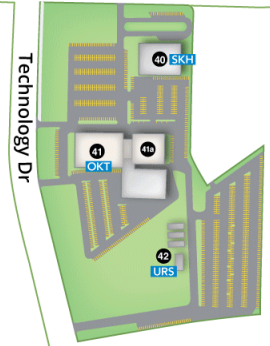
University  
Park



- |   |   |   |
|---|---|---|
| 1. <b>NCH</b> North Campus Residence Hall           | 12. Amphitheater  | 22. <b>CGV</b> Charger Village I  |
| 2. <b>FFH</b> Frank Franz Hall                      | 13. <b>WIL</b> Wilson Hall/Disability Support             | 23. <b>ACU</b> Credit Union   |
| 3. <b>MOR</b> Morton Hall                           | 13a. Wilson Theater                                       | 24. University Greenway   |
| 3a. Studio 106                                      | 14. <b>BAB</b> Business Administration Building           | 25. <b>SSB</b> Student Services Center/Opening 2016   |
| 4. <b>UGG</b> Union Grove Gallery and Meeting Hall  | 14a. Chan Auditorium                                      | 26. <b>CRH</b> Robert "Bud" Cramer Research Hall (National Space Science and Technology Center and NOAA Weather Forecasting Office) |
| 5. <b>SPR</b> Spragins Hall                         | 15. <b>UFC</b> University Fitness Center                  | 27. <b>SWI</b> SWIRLL (Severe Weather Institute Research and Lightning Laboratory)  |
| 6. <b>ROB</b> Roberts Hall                          | 16. <b>IMF</b> Intermodal Parking Facility                | 28. <b>CGP</b> Charger Park   |
| 6a. Roberts Recital Hall                            | 16a. Public Safety  | 29. <b>OPB</b> Optics Building  |
| 7. <b>CTC</b> Conference Training Center/Admissions | 17. <b>CGU</b> Charger Union/Campus Visits and Technology | 30. <b>MSB</b> Materials Science Building   |
| 7a. Exhibit Hall                                    | 18. <b>SST</b> Shelby Center for Science and Technology   | 30a. McDonnell Douglas Auditorium   |
| 8. <b>CCH</b> Central Campus Residence Hall         | 19. Fraternity/Sorority Row                               | 31. <b>ENG</b> Engineering Building   |
| 9. <b>BEV</b> Bevill Conference Center & Hotel      | 20. <b>SECH</b> Southeast Campus Housing                  |   |
| 10. <b>NUR</b> Nursing Building                     | 21. Charger Village Food Court                            |   |
| 11. <b>LIB</b> Salmon Library                       |   |   |



- |  |
|--|
| 32. <b>VBH</b> Wernher von Braun Research Hall     |
| 33. VBH Annex                                      |
| 34. <b>PPB</b> Physical Plant                      |
| 35. <b>REC</b> Central Receiving and Shipping      |
| 36. <b>JRC</b> Johnson Research Center             |
| 37. Propulsion Research Lab                        |
| 38. <b>LRH</b> WLRH Radio Station                  |
| 39. <b>BSB</b> Business Services Bldg./Copy Center |
| 40. <b>SKH</b> Shelby King Hall                    |
| 41. <b>OKT</b> Olin B. King Technology Hall        |
| 41a. Oak Ridge-Huntsville Partnership              |
| 42. <b>URS</b> UAH Rise School                     |
| 43. <b>UPK</b> University Park                     |







Creating a music recording studio including  
an 8028 Neve sound-mixing console





Coming Spring 2016 — Student Services Building

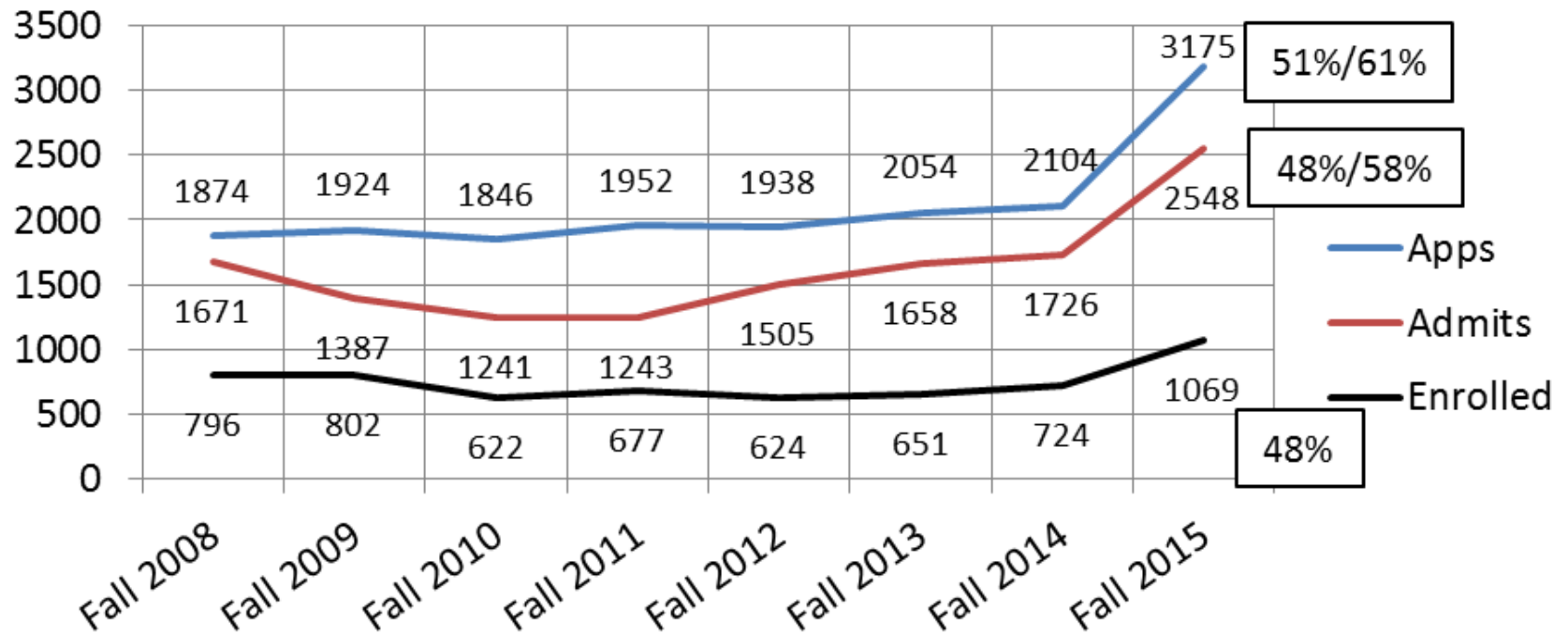






Coming spring 2016

## Freshmen Fall 2015 (4/20/2015)







THE UNIVERSITY OF  
ALABAMA IN HUNTSVILLE