



THE UNIVERSITY OF
ALABAMA IN HUNTSVILLE

AGENDA

- Enrollment
 - Growth Strategies
 - Enrollment History and Projections
 - Campus Enhancements/Student Life
- Research Focus
- College Academy: Background

ENROLLMENT GROWTH STRATEGIES

- Merit Tuition Scholarship Program
- Vice President for Students Affairs
- Expanded Marketing/Face-to-Face Recruitment
- Transition to Block Tuition
- Improved Retention
- Address Underperforming Units
- Campus Enhancements
- Enhanced Student Life

Merit Tuition Scholarships

TEST SCORES	ACT	25 – 27	28 – 29	30 – 33	34 – 36
	SAT (redesigned)	1200 – 1300	1310 – 1380	1390 – 1510	1520 – 1600
HIGH SCHOOL GPA	4.0+	50%	67%	100%	100%*
	3.50 – 3.99	40%	45%	100%	100%
	3.00 – 3.49	35%	35%	45%	50%

**Covers on-campus housing in addition to tuition.*

Tuition is the cost per credit hour of enrollment not including academic fees.

ENROLLMENT GROWTH STRATEGIES

- On Campus Face-to-Face Recruitment
 - Campus Tours/Charger Preview/Discovery Day
- Face-to-Face Recruitment
 - Alabama
 - Georgia
 - South Carolina
 - Kentucky
 - Mississippi
 - Tennessee
 - North Carolina
 - Ohio
 - Missouri
- Expanding Face-to-Face Recruitment
 - Florida
 - Pennsylvania
 - DC
 - Texas

#1 Best College Town in the South!

– *Southern Living*




THE UNIVERSITY OF
ALABAMA IN HUNTSVILLE



Over 110 undergraduate programs and areas of study within
7 colleges: AHS, Bus Ad, Ed, Eng, Nur, Sci, PCS, plus


Honors College



... & CINFAS

WHEN IN IDEAL FORM

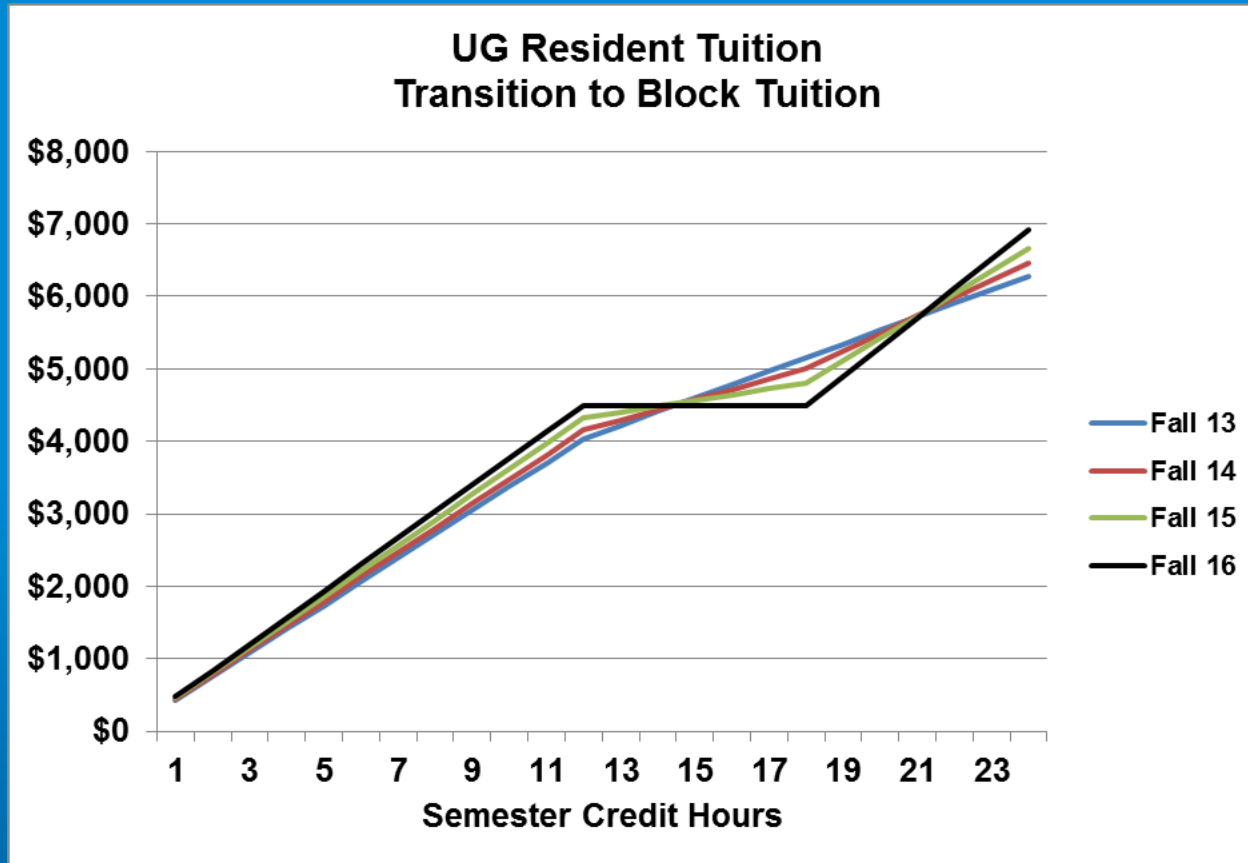
Beauvoir	Aristophanes	Singh
<ul style="list-style-type: none">• love is positive• love is the attempt/reciprocal relationship between 2 selves• recognizing each other as selves/beings	<ul style="list-style-type: none">• love is attempt at wholeness• love is a quest for wholeness yet tragic b/c we don't fully realize itdelusional	<ul style="list-style-type: none">• melding—overcoming barriers of separation• desire to meld/overcome boundaries of self + other• REALIZABLE IDEAS↳ POSSIBLY



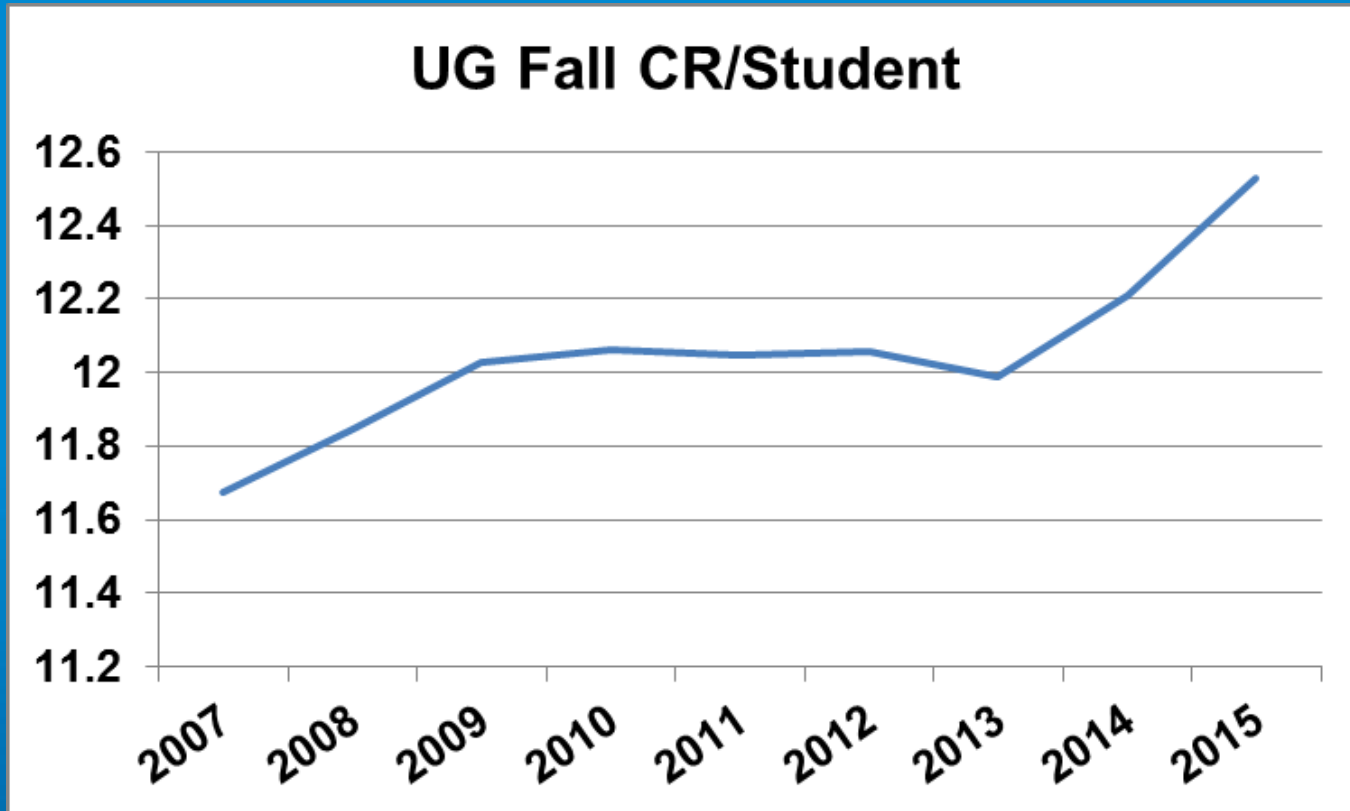
#1 Return on Investment
among all schools in Alabama
and #33 among all public
schools in the nation!

– *Best Colleges*

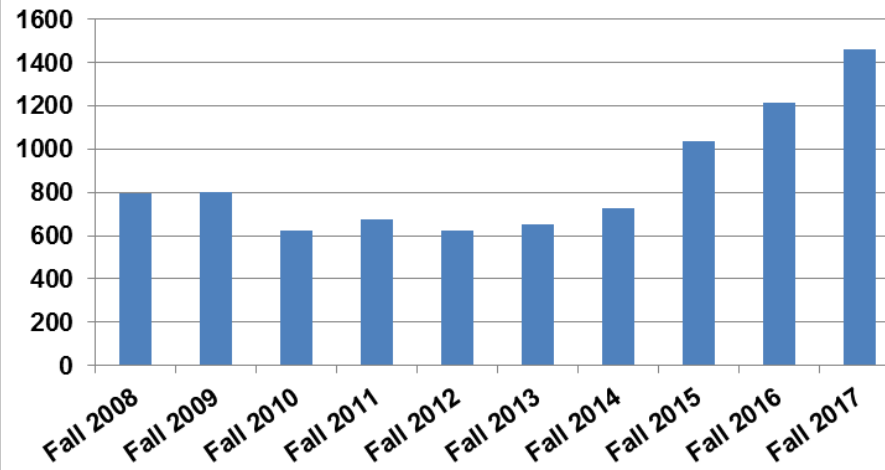
TUITION TRANSITION



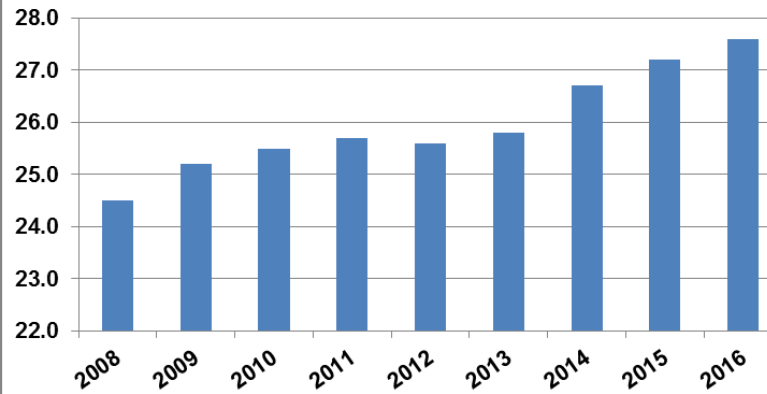
TUITION TRANSITION



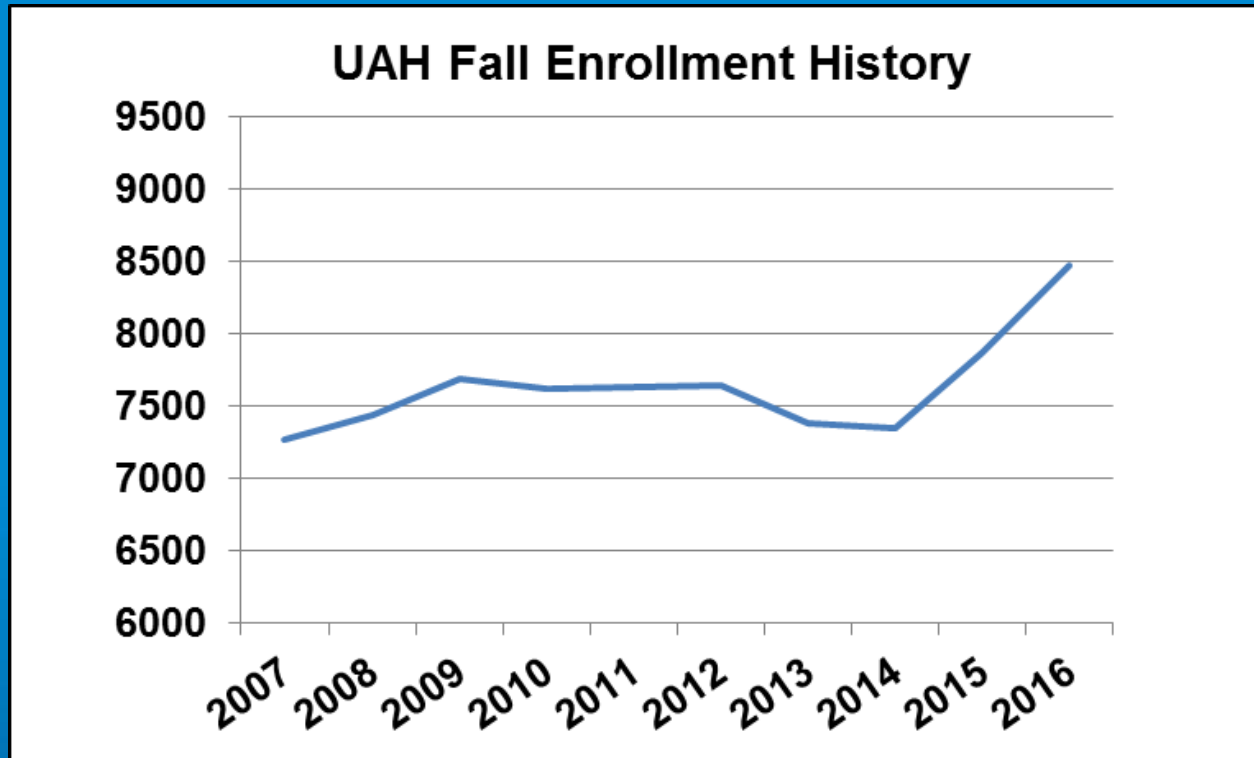
UAH Freshman Enrollment History/Projections



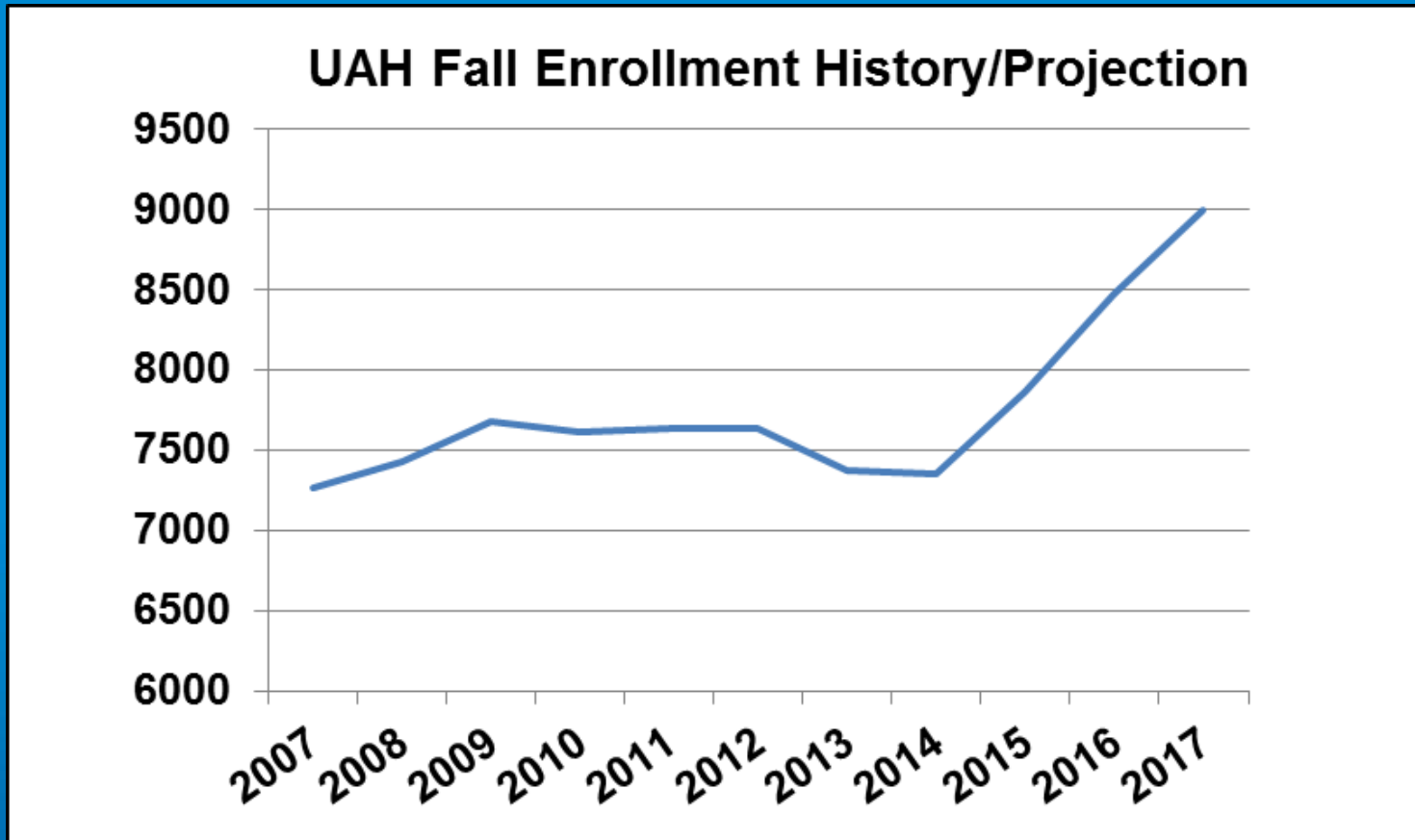
Freshman Cohort ACT



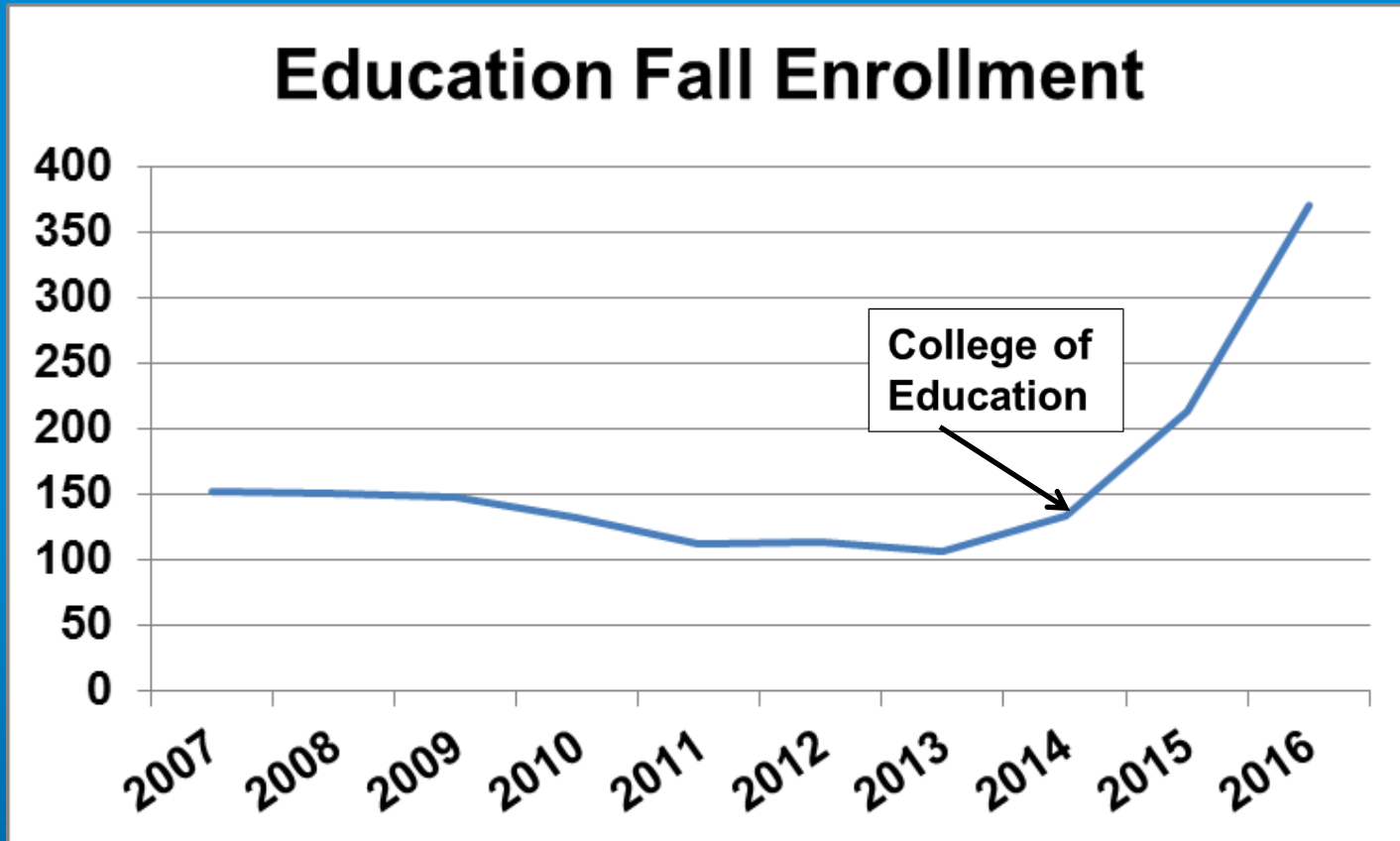
ENROLLMENT



ENROLLMENT



EDUCATION



Campus Enhancements





Campus
enhancements.



THE UNIVERSITY OF
ALABAMA IN HUNTSVILLE

Student Life





A new residence hall is being planned for a Fall 2018 opening.

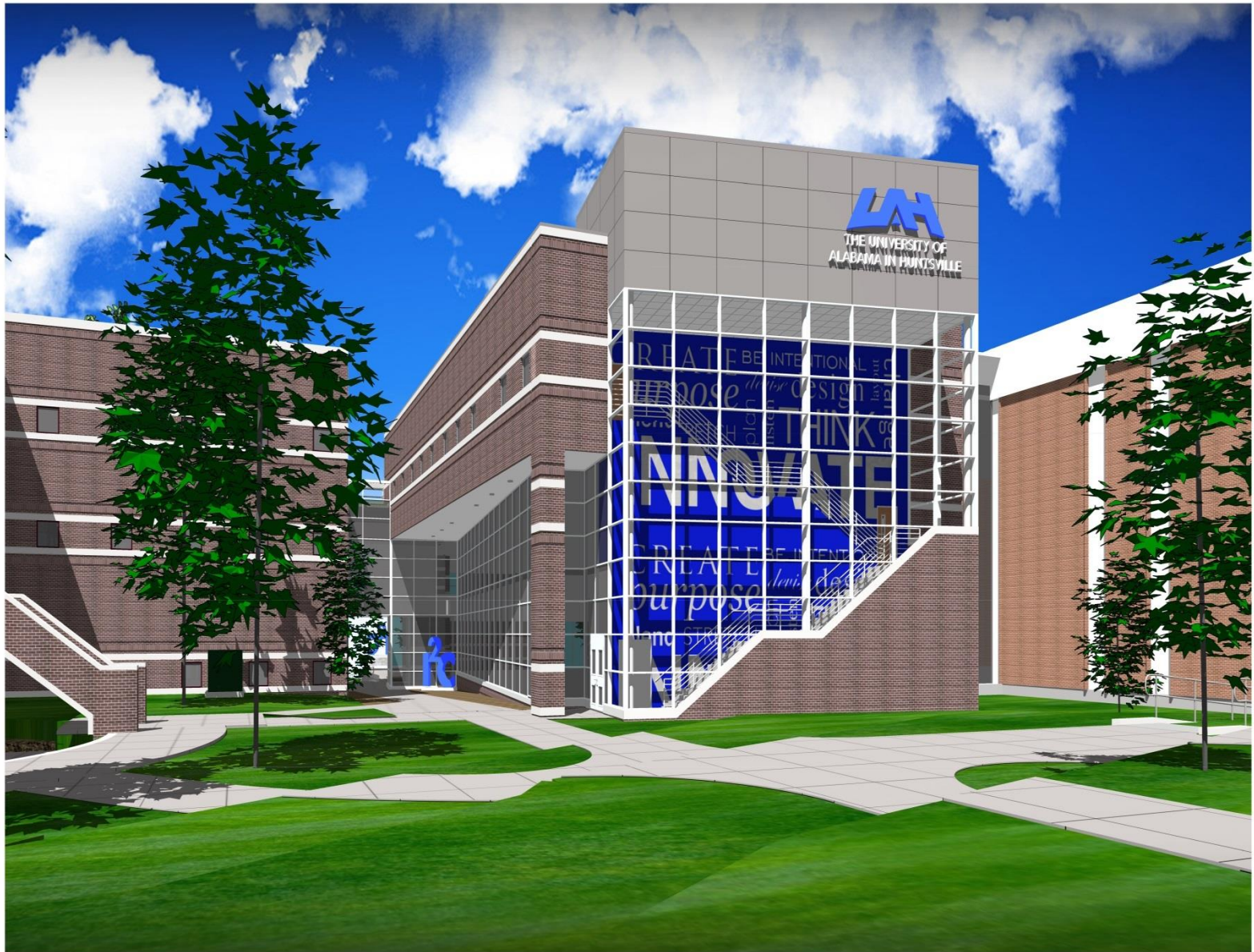


I²C

Invention to Innovation Center

WEST ELEVATION 2

FUOQA
& PARTNERS
ARCHITECTS



I²C

Invention to Innovation Center

EAST ELEVATION 1

FUQUA
& PARTNERS
ARCHITECTS

RESEARCH

- 2015 Federal Expenditures in Research
 - 6th Aeronautical & Astronautical Engineering
 - 11th Atmospheric Science
 - 11th Computer Sciences
 - 14TH NASA
 - 17th Astronomy
 - 18th Business & Management
 - 25th DoD
- 2014 R&D Expenditures
 - 28th per Faculty + Staff

RESEARCH



ALABAMA ACCOLADE

National Academy of Sciences
elects Dr. Gary Zank

COLLEGE ACADEMY

- Early College High School
 - ECHS Initiative: 2002 with funding from Bill & Melinda Gates Foundation and others
 - Students receive a high school diploma plus college credit via completing college courses
- Huntsville's College Academy
 - Magnet program at Jemison High School

COLLEGE ACADEMY

- Huntsville's College Academy
 - Hereford vs Huntsville Board of Education: 1963
 - DOJ approval of school zoning required
 - 2014 rezoning plan rejected by US District Court
 - 2015 Consent Order approving a rezoning plan
 - Motion for Unitary Status following fulfillment of Consent Order obligations

COLLEGE ACADEMY

- Magnet program at Jemison High School one element of Consent Order
- College Academy: High School diploma plus 60 UAH credits
- UAH presentation to prospective students and parents Nov and Dec 2014
- Curriculum submitted Jan 2015
- First class to start fall 2016 selected spring 2015

Center for Cybersecurity Research and Education (CCRE)

\$2.4 Million

External grants and contracts in first year.





THE UNIVERSITY OF
ALABAMA IN HUNTSVILLE