



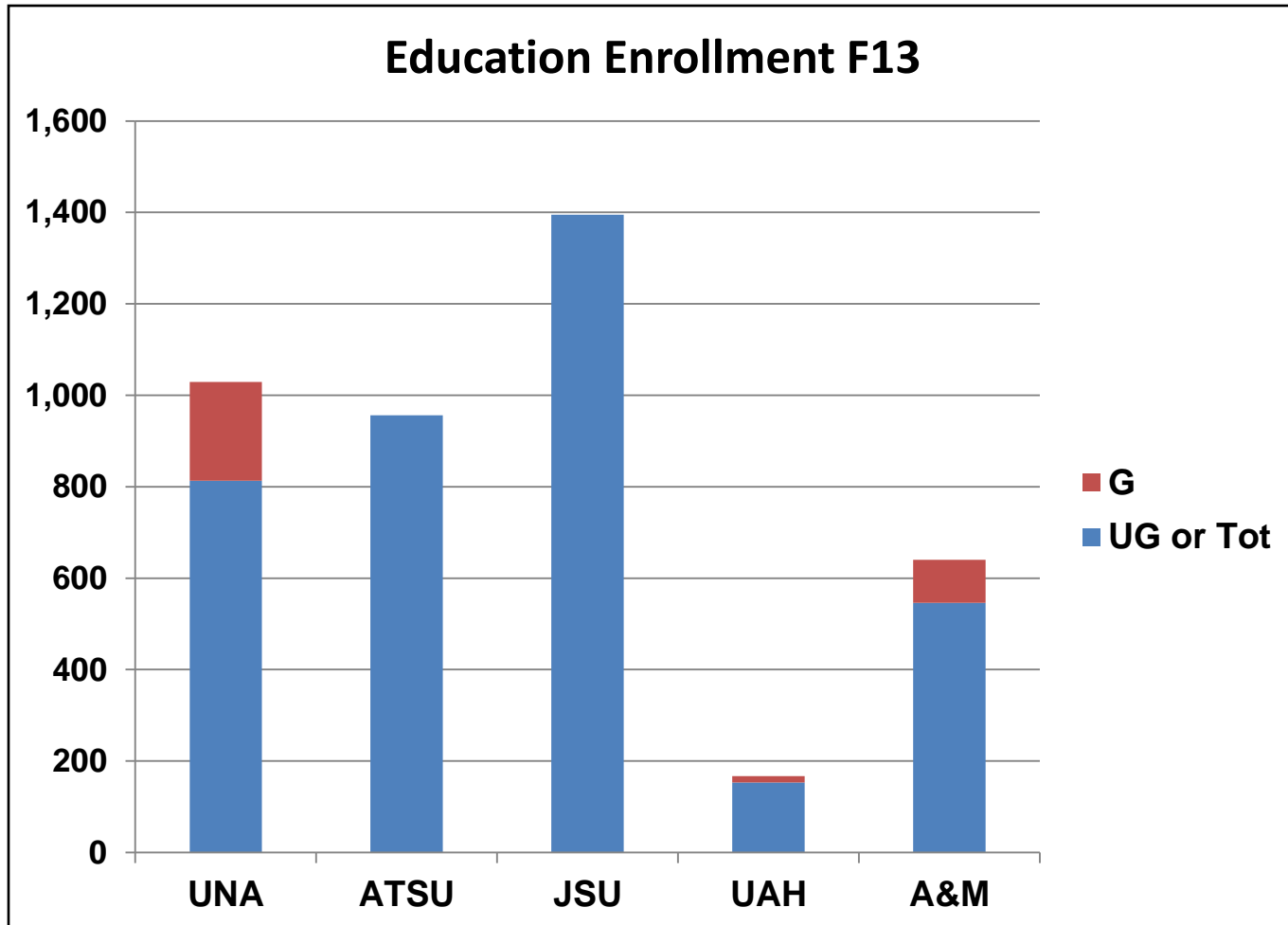
THE UNIVERSITY OF  
ALABAMA IN HUNTSVILLE

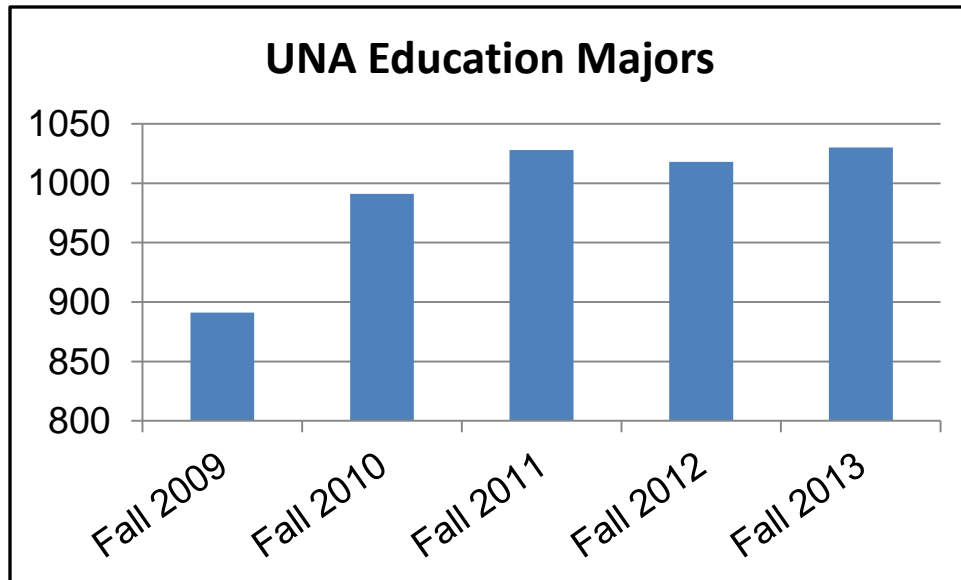
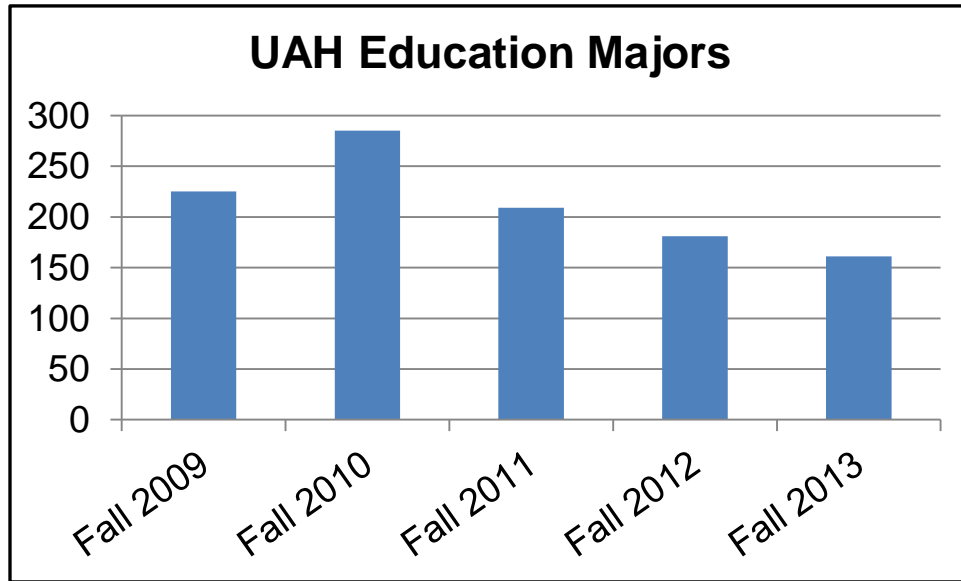
# Agenda

- Education/Rise School
- Madison Hall Replacement/ Parking
- Policy on Policies
- Board of Trustees Meeting Agenda
- Lacrosse

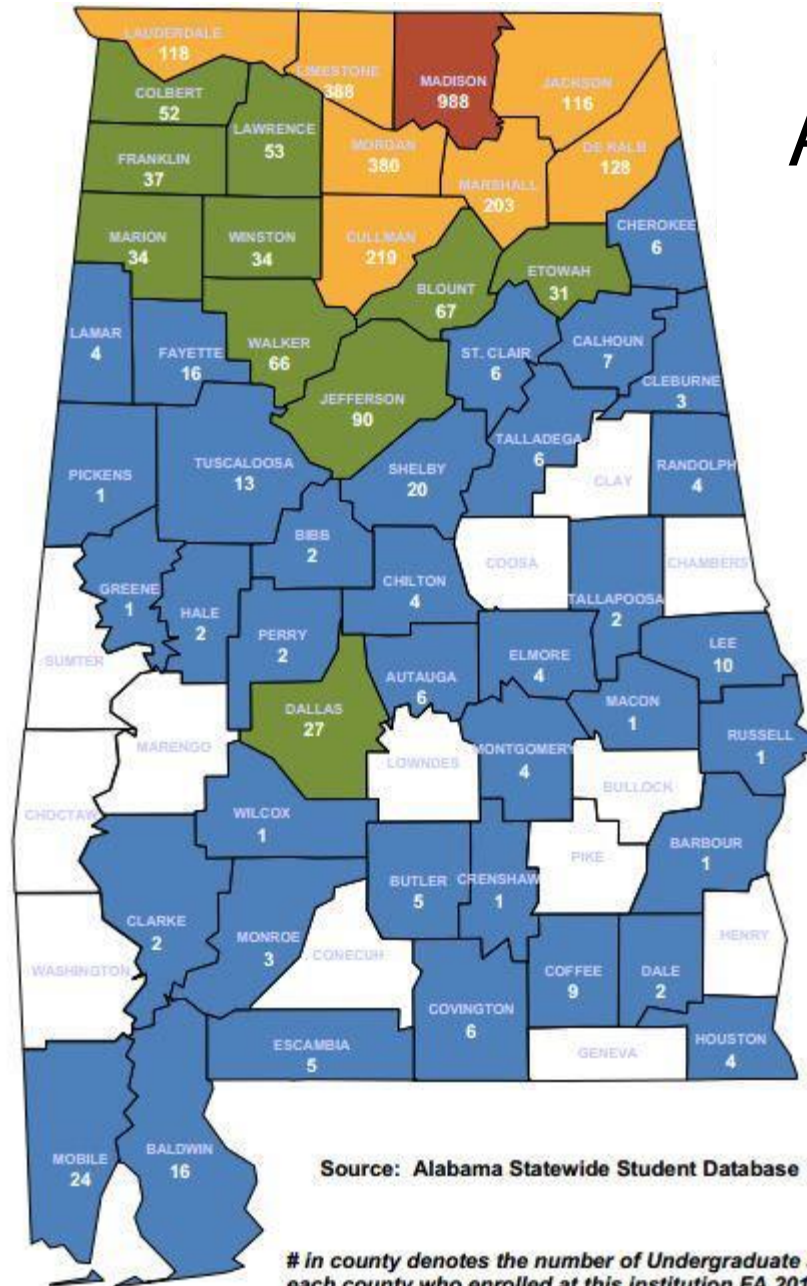
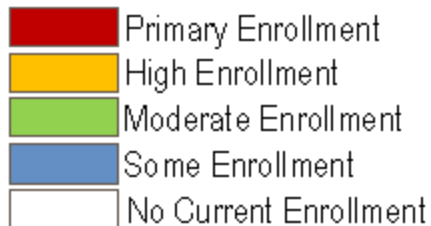


THE UNIVERSITY OF  
ALABAMA IN HUNTSVILLE





# Athens State



# Issues for UAH Education

Issue	Reason	Strategy	Status
Length of Degree	5 yr BA/BS Discipline Degree + Secondary Certification	Credit Hour Reduction (some) to Transition to 4 yr Degree	Complete
Length of Degree	5 yr BA/BS Discipline Degree + Secondary Certification	4 yr BS in Education + Discipline Certification	ACHE Agenda Sep 12
Differentiation	Lack of a Differentiator	Assimilate the Rise School of Huntsville	Board Agenda Sep 19
	Lack of a Differentiator	Special Education Endorsement	In place
	Lack of a Differentiator	Bachelor of Arts in Early Childhood and Collaborative Education	NISP-In Preparation
HPE in CPS	Historical/Was in CLA until 2000	BS in Kinesiology*	Board Agenda Sep 19

\*Might expect 25% of education majors to be in Kinesiology



Alabama Colleges of Education	
University	College of Education
A&M	College of Education, Humanities, and Behavioral Sciences
ASU	✓
ATSU	✓
AUB	✓
AUM	School of Education
JSU	College of Education and Professional Studies
Troy	✓
UA	✓
UAB	School of Education
UAH	X
UM	✓
UNA	College of Education and Human Sciences
USA	✓
UWA	✓
✓ = College of Education	
X = No College of Education	





THE UNIVERSITY OF  
ALABAMA IN HUNTSVILLE

AL, MS, TN, GA FL Colleges of Education						
State	Public U's	College/School of Education	College/School of Education + 1	College/School of Education +2	% Education (+1 or +2) in Title	Education not in Title
AL	14	10	2	1	93%	UAH
MS	8	3	5	0	100%	Bainbridge (GA)
TN	9	5	0	4	100%	Clay (GA)
GA*	26	18	2	1	81%	GA Tech
FL**	11	7	3	0	91%	S Poly (GA)
						E GA State C
Tot	68	43	12	6	61	FL Polytechnic
%	100%	63%	18%	9%	90%	
*Excludes predominantly Associates Degree institutions						
**Excludes New College of FL (no degree programs)						
+1=Human/Health Sciences/Services/Professions (often)						
+2=Health and Human Sciences/Professional Studies (mostly)						



THE UNIVERSITY OF  
ALABAMA IN HUNTSVILLE



# College of Education

- Enhanced visibility/marketing ability
- Aligns UAH education programs with the competition
- Enhanced recruiting capability
- Increased enrollment
- Additional credit hour production in CLA and COS (e.g., Charger Foundations)
- Expanded programmatic options for students
- Will be viewed favorably in the profession



THE UNIVERSITY OF  
ALABAMA IN HUNTSVILLE

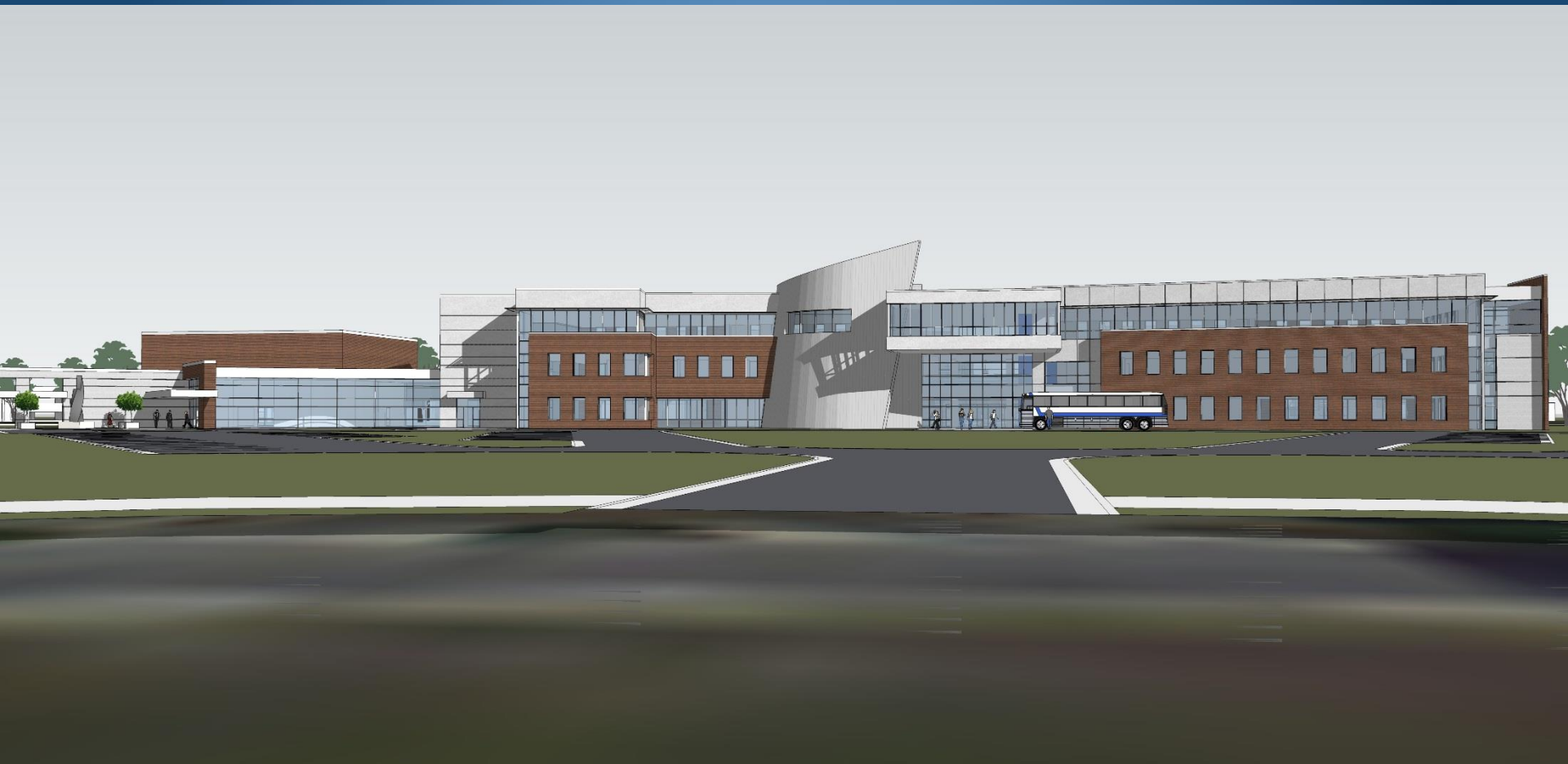
<b>Issue</b>	<b>Reason</b>	<b>Strategy</b>	<b>Status</b>
Length of Degree	5 yr BA/BS Discipline Degree + Secondary Certification	Credit Hour Reduction (some) to Transition to 4 yr Degree	Complete
Length of Degree	5 yr BA/BS Discipline Degree + Secondary Certification	4 yr BS in Education + Discipline Certification	ACHE Agenda Sep 12
Differentiation	Lack of a Differentiator	Assimilate the Rise School of Huntsville	Board Agenda Sep 19
	Lack of a Differentiator	Special Education Endorsement	In place
	Lack of a Differentiator	Bachelor of Arts in Early Childhood and Collaborative Education	NISP-In Preparation
HPE in CPS	Historical	BS in Kinesiology	Board Agenda Sep 19
Lack of Awareness/ Visibility		College of Education	Board Agenda Sep 19



THE UNIVERSITY OF  
ALABAMA IN HUNTSVILLE

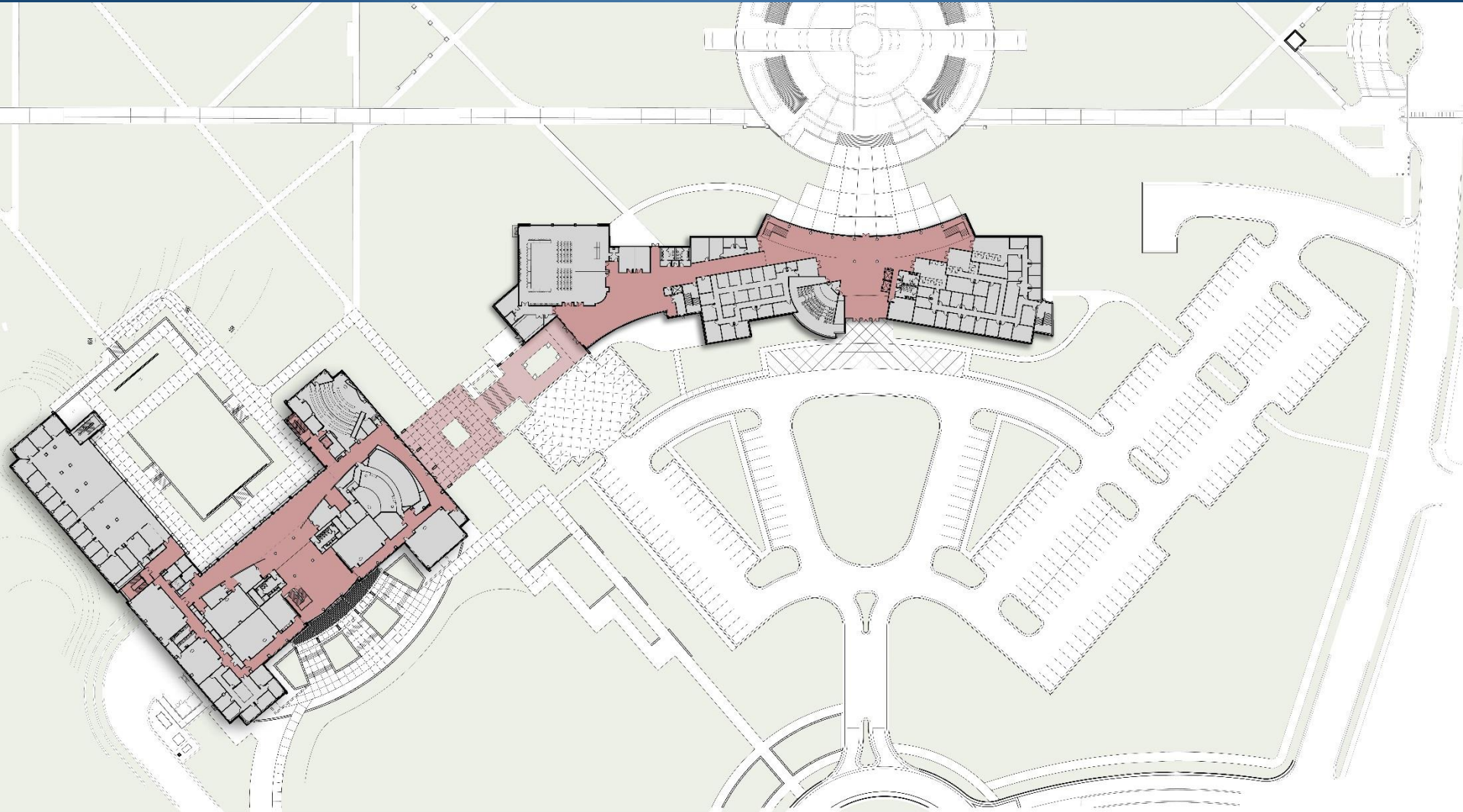
# College of Education

- Explored AY 13-14
- Discussed with Faculty Senate Exec Comm July 14
- Discussed with Department of Education July 14
- Decided to move forward for Sept 19 Board meeting
  - So as not to lose a year of recruiting
  - In parallel with the Rise School assimilation
- Structure
  - Department of Curriculum and Instruction
  - Department of Kinesiology
    - Exercise Science
    - Physical Education
  - UAH Rise School: an Outreach and Service Center





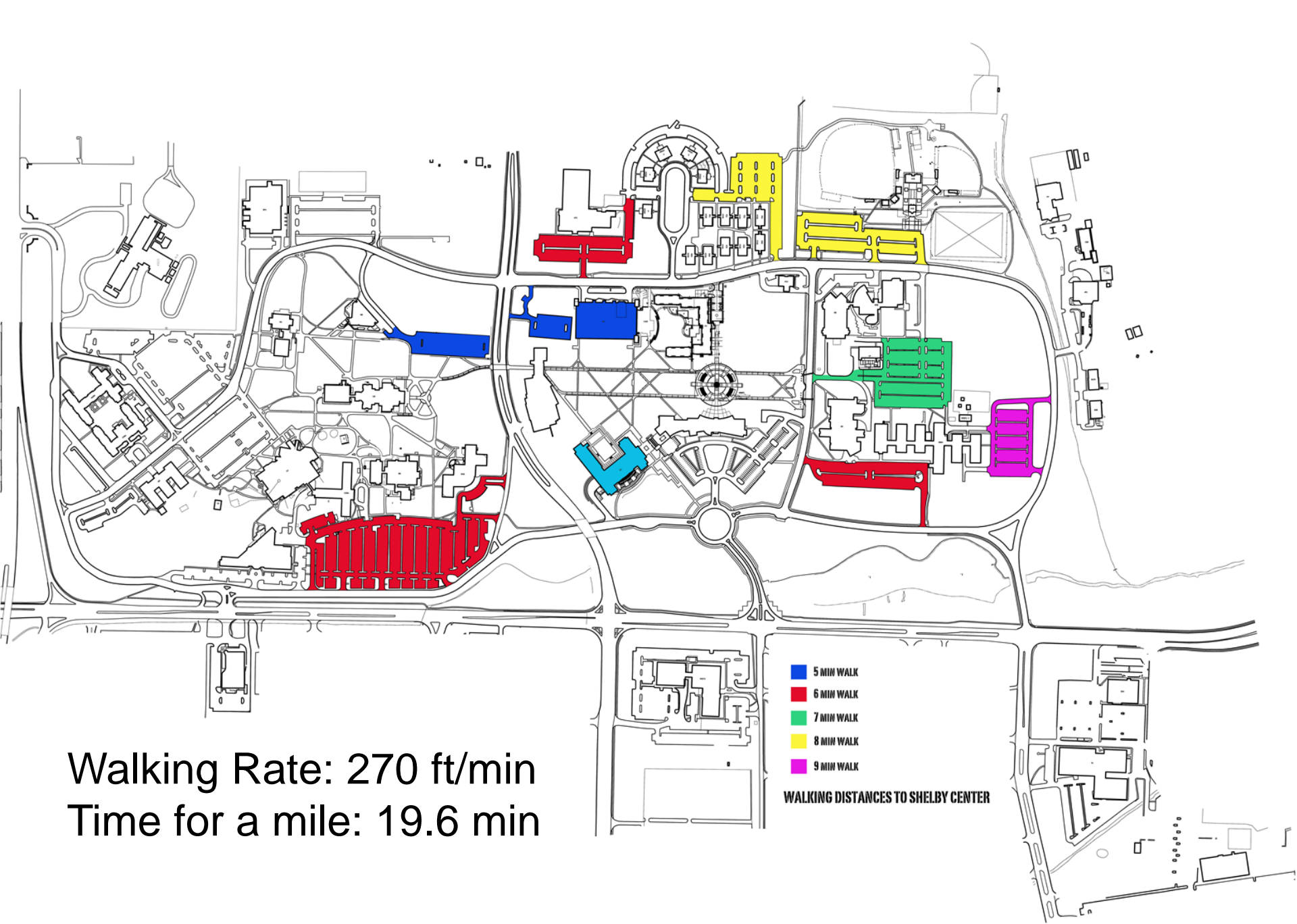




# Parking Impact

- End of July: Construction to begin on Charger Park parking lot extension (207 new spaces)
- Before Nov 15: Charger Park parking lot extension available
- Nov 15: Shelby Center/Madison Hall lot taken offline for construction (355 spaces)
- Nov 17: Start of construction of Welcome Center/Student Services Building
- Spring Semester 2016: Welcome Center/Student Services Building complete (205 spaces)
- Short Term Net: -148 spaces
- Long Term Net: +57 spaces

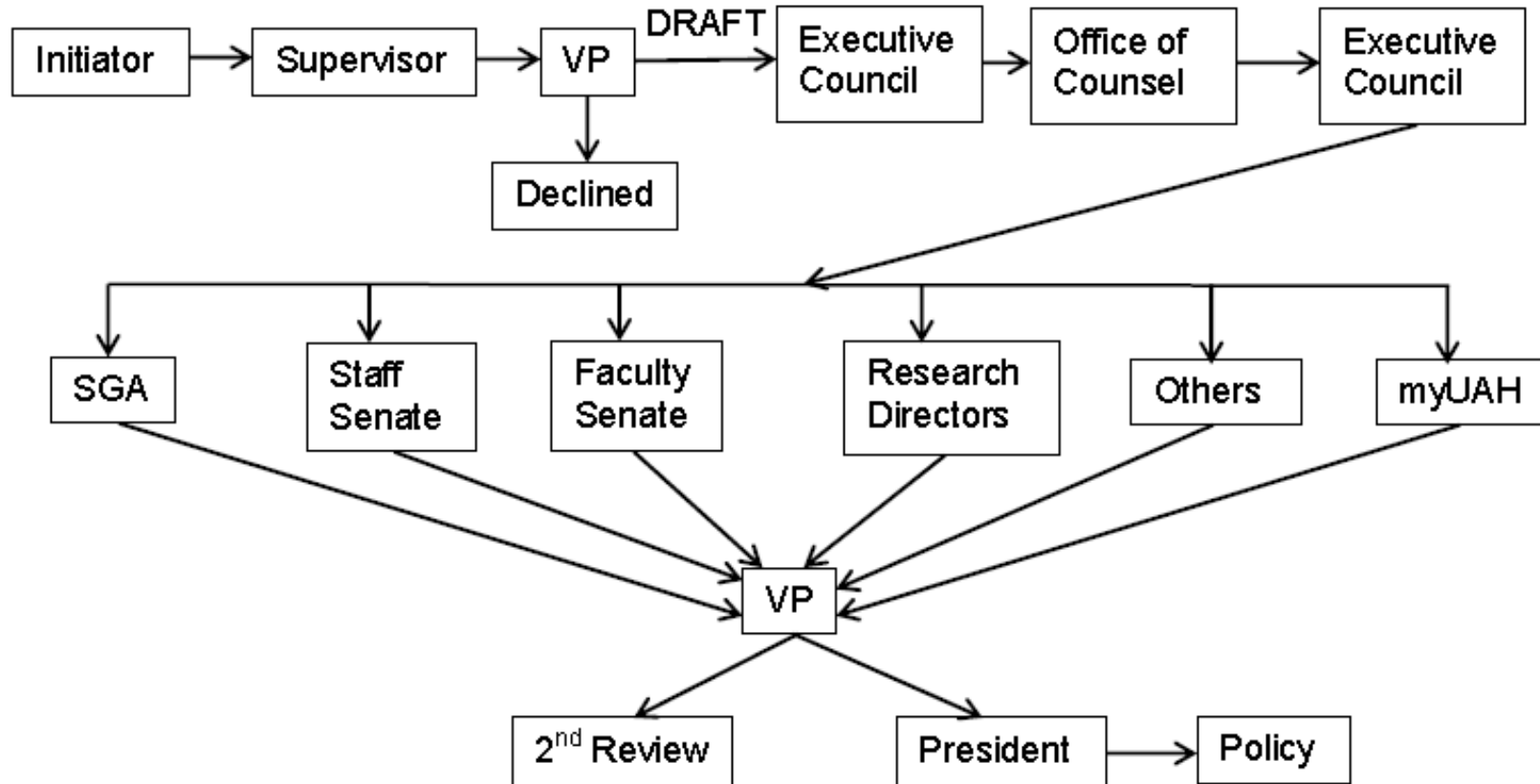




Walking Rate: 270 ft/min  
Time for a mile: 19.6 min

- 5 MIN WALK
  - 6 MIN WALK
  - 7 MIN WALK
  - 8 MIN WALK
  - 9 MIN WALK
- WALKING DISTANCES TO SHELBY CENTER**

# Policy on Policies Development Flow Diagram



# Policy on Policies

- Applicable to University-wide policy
  - Policies approved by the President
- Faculty Handbook
  - States policy
  - May contain/refer to University-wide policy (developed per Policy on Policies)
  - Contains policy through Faculty Senate process
  - Approved at the System level



<b>Board of Trustees-September 2014</b>						
<b>Executive Committee Aug 13 for ACHE December 5 Meeting</b>						
Proposal: MS in Management-Human Resource Management						
Proposal: MS in Management Science-Business Analytics						
Proposal: MS in Supply Chain and Logistics Management						
<b>Board Meeting Sept 19-Submitted</b>						
Proposal: MS in Space Science						
Proposal: PhD in Space Science						
NISP: BA in Theatre						
Proposal: BS in Kinesiology						
Assimilation of the Rise School of Huntsville						
Establishment of a College of Education						
Name Change-Center for Cybersecurity Research and Education						
Capital Plan						
FY15 Budget						
Emeritus Faculty						
Recognition of Faculty Senate President						
Appointment of Eminent Scholar in Propulsion (Ligrani)						
Appointment of Distinguished Professor in ECE (Shtessel)						
Closure of Centers/Institutes						
Naming of Davidson Cybersecurity Lab						
Gift Resolutions						
Commencement Speaker						