

# Quick Start Guide: Wireless Connection

---

## Audience

This document is for UAH faculty, staff, and students using the campus wireless network.

## Overview

This document outlines the process of establishing a wireless connection via Windows 8, Windows 7, Windows Vista, Windows XP, Mac OS X, Ubuntu GNU/Linux (and others), Android, and iOS (including iPhones, iPads, and iPods).

## Details

### Network Keys

Use the appropriate key for your UAH affiliation. Be mindful of spaces, punctuation, and capitalization.

- Student5: Go Chargers!
- Faculty5: You will be tested
- Staff5: Where is the coffee?
- Guest5: Welcome to UAH

### Windows 8

1. Move the mouse pointer to the bottom right corner of the screen. Alternatively, on a touch screen device, drag your finger inward from the right edge of the screen.
2. From the icons that appear at the right edge of the screen, choose the "Settings" gear. This is the last icon shown at the edge of the screen.
3. A list of networks will appear. Find the appropriate wireless network in the list. For example, if you are a student, locate Student5.
4. Click or tap on the correct network.
5. When prompted, enter the key for the network, and then select Next. The keys are listed at the top of this page. Be mindful of the spaces and capitalization.
6. If prompted, select that this is a public network (sharing should not be enabled).

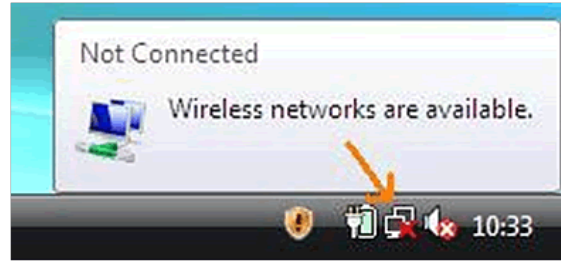
### Windows 7

1. Click the Start button in the lower left corner of the screen.
2. Type "connect" and then click the Connect to a network option.
3. A list of networks will appear. Find the appropriate wireless network in the list. For example, if you are a student, locate Student5.
4. Double-click on the correct network.
5. When prompted, enter the key for the network, and then press Enter. The keys are listed above. Be mindful of the spaces and capitalization.

- If prompted, select that this is a public network (sharing should not be enabled).

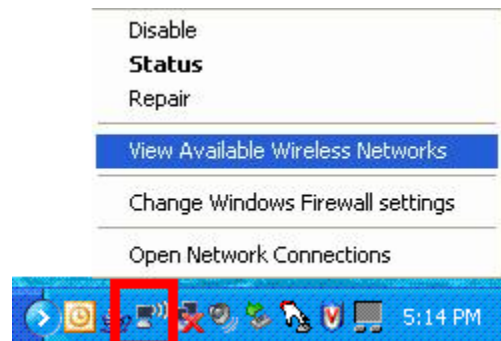
## Windows Vista

- In the lower right corner of the screen, locate the icon indicated in the picture at right.
- Click the icon and choose "Connect to a network."
- A list of networks will appear. Find the appropriate wireless network in the list. For example, if you are a student, locate Student5.
- Double-click on the correct network.
- When prompted, enter the key for the network, and then press Enter. The keys are listed above. Be mindful of the spaces and capitalization.
- If prompted, select that this is a public network (sharing should not be enabled).



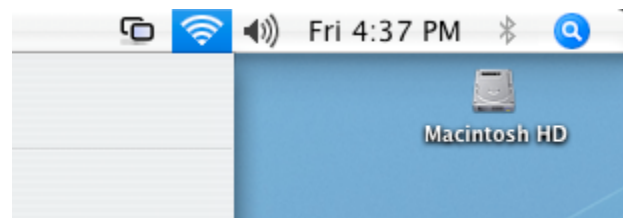
## Windows XP

- In the lower right corner of the screen, locate the icon indicated in the picture at right.
- Right-click the icon and choose "View Available Wireless Networks."
- A list of networks will appear. Find the appropriate wireless network in the list. For example, if you are a student, locate Student5.
- Double-click on the correct network.
- When prompted, enter the key for the network in both fields, and then press Enter. The keys are listed above. Be mindful of the spaces and capitalization.



## Mac OS X

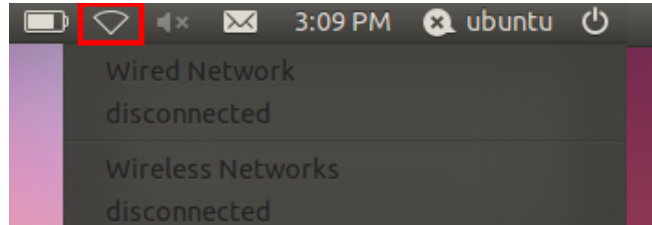
- In the upper right corner of the screen, locate the icon indicated in the picture at right.
- Click the icon.
- A list of networks will appear. Find the appropriate wireless network in the list. For example, if you are a student, locate Student5.
- Click on the correct network.
- When prompted, enter the key for the network in both fields, and then press Enter. The keys are listed above. Be mindful of the spaces and capitalization.



## Ubuntu GNU/Linux (and others)

- In the upper right corner of the screen, locate the icon indicated in the picture at right. (It may also look like signal strength bars, or be located in the lower right corner, depending on the Linux distribution.)
- Click the icon.

3. A list of networks will appear. Find the appropriate wireless network in the list. For example, if you are a student, locate Student5.
4. Click on the correct network.
5. When prompted, enter the key for the network in both fields, and then tap Connect. The keys are listed above. Be mindful of the spaces and capitalization.



## Android

1. From the home screen press the Menu button, and then tap Settings.
2. Tap “Wi-Fi.”
3. If Wi-Fi is not already on, tap the switch to turn it on.
4. A list of networks will appear. Find the appropriate wireless network in the list. For example, if you are a student, locate Student5.
5. Tap the correct network.
6. When prompted, enter the key for the network in both fields, and then tap Connect. The keys are listed above. Be mindful of the spaces and capitalization.

## iOS (including iPhones, iPads, and iPods)

1. Unlock your device, and then press the Home button.
2. Swipe left and right to find the “Settings” icon, then tap it.
3. Tap “Wi-Fi.”
4. If Wi-Fi is not already on, tap the switch to turn it on.
5. A list of networks will appear. Find the appropriate wireless network in the list. For example, if you are a student, locate Student5.
6. Tap the correct network.
7. When prompted, enter the key for the network in both fields, and then tap Join. The keys are listed above. Be mindful of the spaces and capitalization.