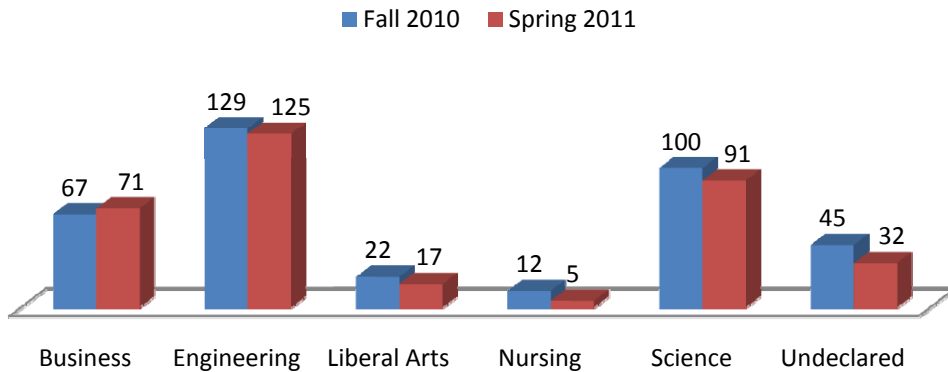
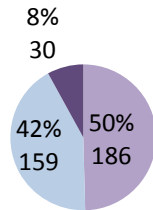


Total International Enrollment by college Academic Year 2010-2011



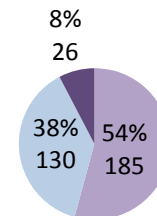
Total International Enrollment by level; Fall 2010

■ Graduate
■ Undergraduate
■ Non Degree & IEP



Total International Enrollment by level; Spring 2011

■ Graduate
■ Undergraduate
■ Non Degree & IEP



VISA STATUS

| Semester | F1 | J1 | OTHERS (E,H,L,NS,R,TN,etc) |
|-------------|-----|----|----------------------------|
| Fall 2010 | 313 | 8 | 54 |
| Spring 2011 | 291 | 10 | 40 |

| F1 Visa by college 2010-2011 | | |
|------------------------------|-----------|-------------|
| College | Fall 2010 | Spring 2011 |
| Business | 57 | 61 |
| Engineering | 117 | 113 |
| Liberal Arts | 18 | 13 |
| Nursing | 7 | 4 |
| Science | 90 | 82 |
| Undeclared | 24 | 18 |

*International students are defined as all non-immigrants (F-1, J-1, H, TN, etc.) enrolled in any number of hours in the given semester.